

VULCANO



| | | | |
|--------------|--|-------------|-----------|
| Job Name | | Contractor | |
| Location | | Distributor | |
| Engineer | | Date | |
| Submitted to | | Model | THS-100HV |
| Schedule ID | | | |

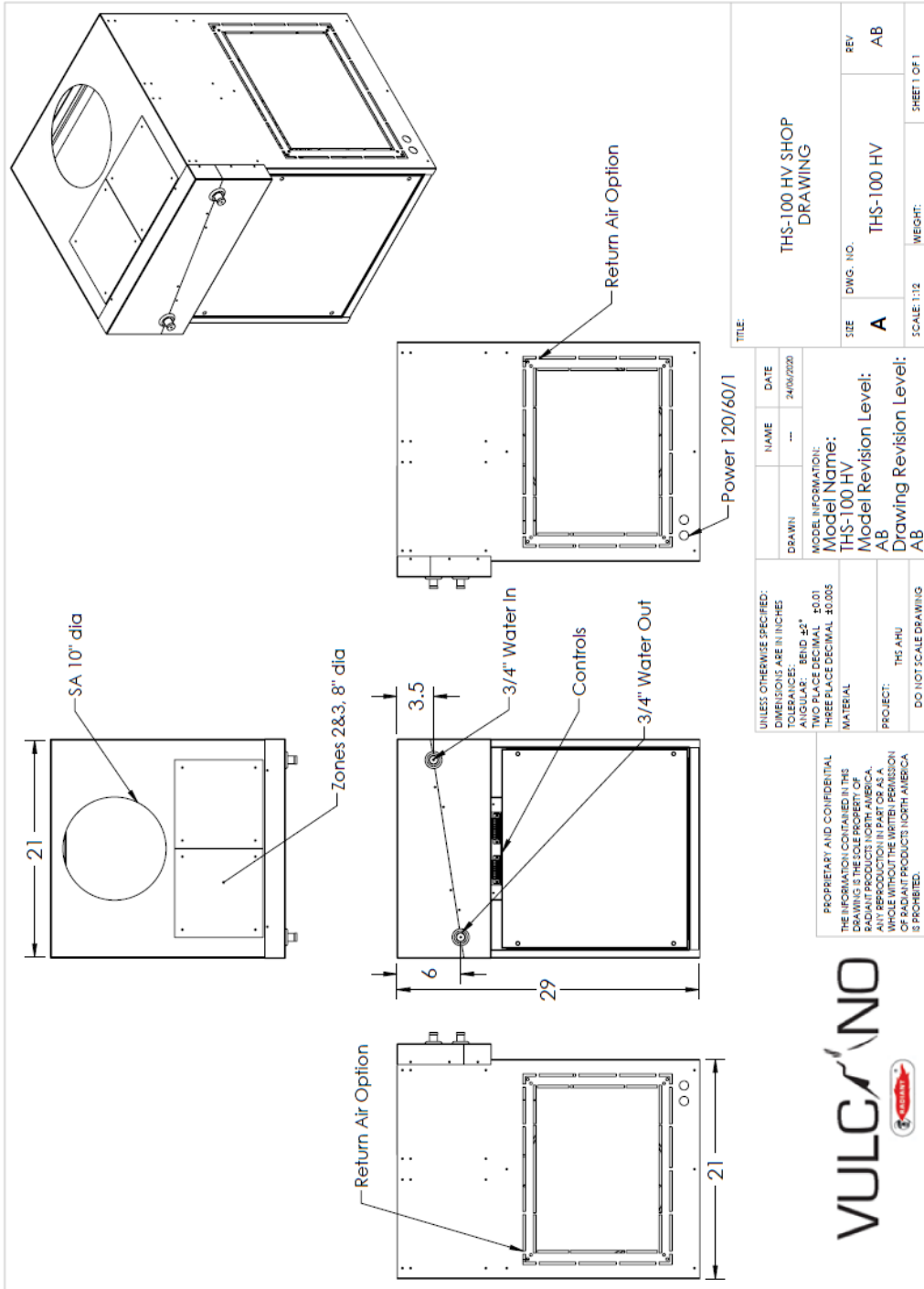
| Specification | THS 100-HV |
|-------------------------------------|------------|
| Btu Heating @180 F EWT | 97.5 MBH |
| Btu Heating @160 F EWT | 80 MBH |
| Btu Heating @140 F EWT | 61.5 MBH |
| Btu Heating @120 F EWT | 45 MBH |
| Rated water flow (GPM) | 7 |
| Piping connection, Copper (inch) | 3/4 |
| Cooling Capacity (ton)* | 2.5-3 |
| CFM @ 1.5" external static pressure | 1,200 |
| Recommended filter size | 16x20 |
| Cabinet Size W x D x H (in) | 21x21x29 |
| Supply Air opening W x D (in) | 11.8x17.8 |
| Return Air Opening W x D (in) | 18.3x14.3 |
| Supply voltage | 115/60/1 |
| Fan motor (hp) | 3/4 |
| FLA | 9.2 |
| MCA | 12.5 |
| MOP | 15 |
| Shipping weight (lb) | 120 |
| Shipping Dimensions (WxDxH in) | 36x24x26 |

* select motor tap to match condenser requirements

Features:

The THS 100-HV is a high efficiency hydronic air handler with constant speed EC Motor suitable for high velocity ducting applications. Use with Radiant zone dampers THS-2ZHV-2 for 2 or 3 independent comfort zones. The ECM low speed is only 45% of maximum making for quiet single zone calls or continuous ventilation and filtration.

Shop Drawing:



PROPRIETARY AND CONFIDENTIAL
 THE INFORMATION CONTAINED IN THIS
 DRAWING IS THE SOLE PROPERTY OF
 RADIANT PRODUCTS NORTH AMERICA.
 ANY REPRODUCTION IN PART OR AS A
 WHOLE WITHOUT THE WRITTEN PERMISSION
 OF RADIANT PRODUCTS NORTH AMERICA
 IS PROHIBITED.

UNLESS OTHERWISE SPECIFIED:
 DIMENSIONS ARE IN INCHES
 TOLERANCES:
 ANGULAR: ±0.1°
 HOLE POSITION: ±0.01
 HOLE DIA: ±0.005
 THREE PLACE DECIMAL: ±0.005
 MATERIAL:
 PROJECT: THE AHU
 DO NOT SCALE DRAWING

MODE INFORMATION:
 Model Name: THS-100 HV
 Model Revision Level: AB
 Drawing Revision Level: AB

DRAWN: --
 NAME: --
 DATE: 24/06/2020

TITLE: THS-100 HV SHOP DRAWING

| | | |
|-------------|----------------------|--------------|
| SIZE: A | DWG. NO.: THS-100 HV | REV: AB |
| SCALE: 1:12 | WEIGHT: | SHEET 1 OF 1 |