
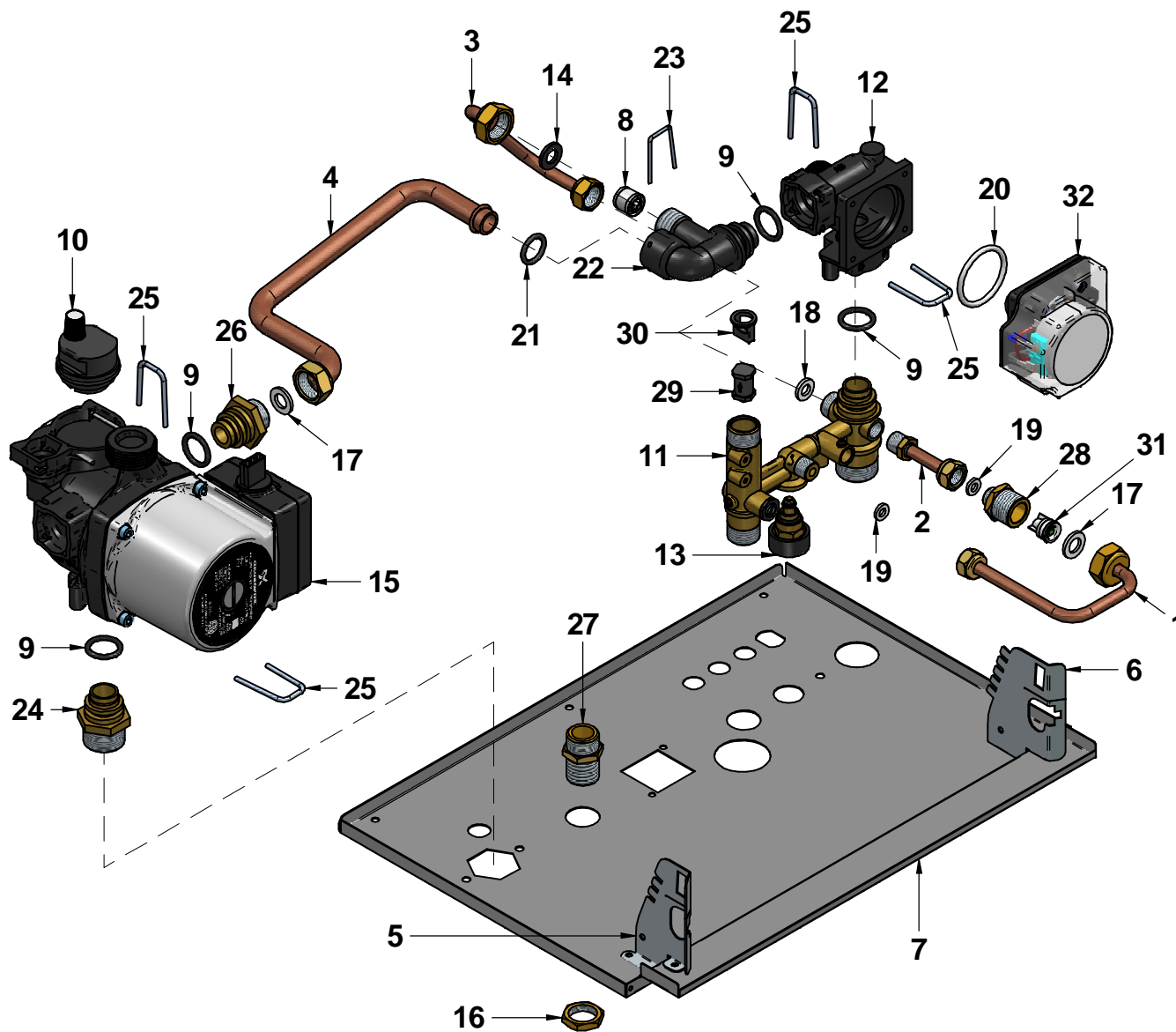



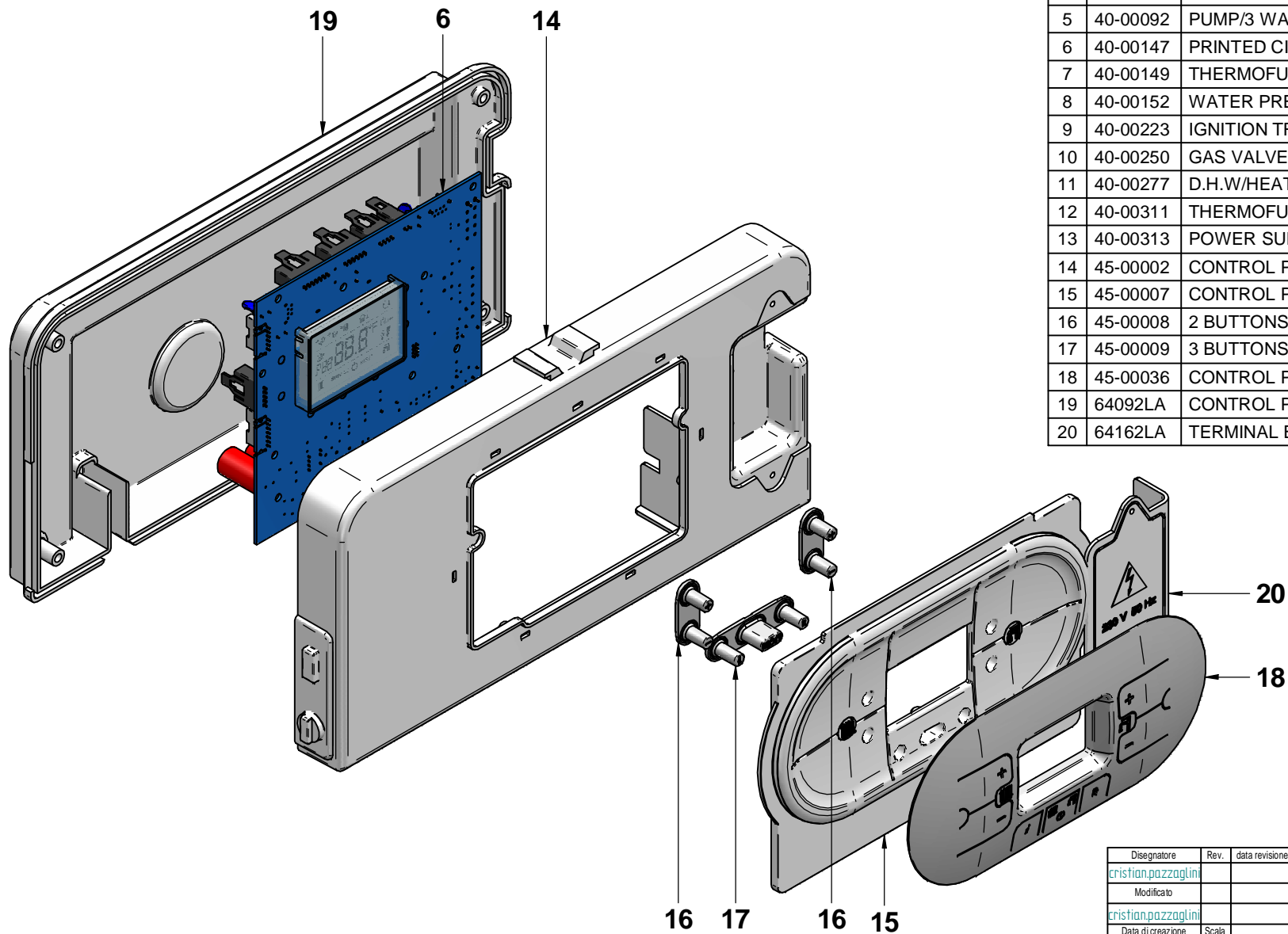
N°	Code	Description	Qty
1	15-01038	FRAME	1
2	15-01040	FRAME RIGHT/LEFT HOOK	2
3	15-01042	CONDESATE SIPHON FIXING PLATE	1
4	15-01043	CONTROL PANEL LEFT SIDE BRACKET	1
5	15-01044	CONTROL PANEL RIGHT SIDE BRACKET	1
6	15-01046	CASING LEFT SIDE PANEL	1
7	15-01047	CASING RIGHT SIDE PANEL	1
8	15-01048	EXPANSION VESSEL FIXING BRACKET	1
9	15-01105	EXPANSION VESSEL BOTTOM BRACKET	1
10	15-01222	FLUE EXHAUST CAP	1
11	15-01308	ROOM-SEALED CHAMBER TOP	1
12	15-01313	ROOM-SEALED CHAMBER BOTTOM PLATE	1
13	15-01341	TRANSFORMER FIXING PLATE	1
14	35-00081	CASING FRONT PANEL	1
15	35-00082	INSULATION FRONT PANEL	1
16	35-00083	INSULATION RIGHT/LEFT PANELS	2
17	35-00087	INSULATION ROOM-SEAL CHAMBER TOP	1
18	43284LA	ALUMINIUM ADHESIVE FRONT PANEL	1

Disegnatore	Rev.	data revisione	Autore revisione	Descrizione revisione
crislian.pozzaglini				
Modificato				
crislian.pozzaglini				
Data di creazione	Scala	Materiale	Sp.	Peso (Kg)
19/04/2016	16			4706,322
Note				
Descrizione completa				
R2K 24 "COMBI-TECH" MET				
CDN-CS R2 UL/ESA				
			tecnologia nel calore dal 1959	
Codice			Revisione	
A341A372E201			00	




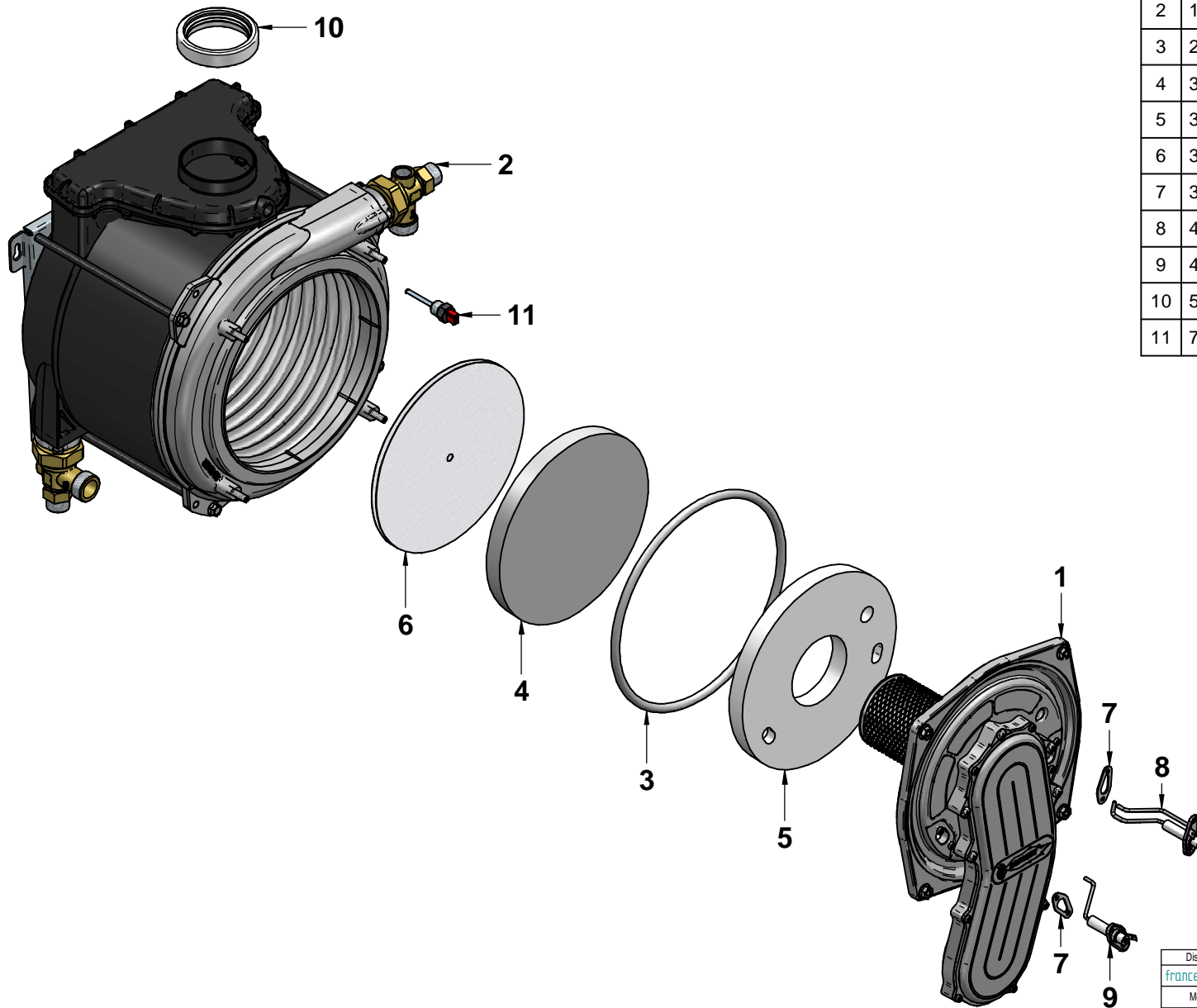
N°	Code	Description	Qty
1	12-01406	PIPE Ø 8 N.RET.VALVE FLOW	1
2	12-01407	PIPE Ø8 NOT RETURN VALVE L=57 STRAIGHT	1
3	12-01601	PIPE Ø8 BY-PASS	1
4	12-01710	PIPE Ø14 DHW LOOP	1
5	15-01043	CONTROL PANEL LEFT SIDE BRACKET	1
6	15-01044	CONTROL PANEL RIGHT SIDE BRACKET	1
7	15-01313	ROOM-SEALED CHAMBER BOTTOM PLATE	1
8	25-00256	BY-PASS D.15	1
9	25-00269	PUMP/PUMP CONNECTION BODY OR 18,64x3,53 EPDM	4
10	25-00330	AIR VENT VALVE GRUNDFOSS	1
11	25-00401	COLD WATER/HEATING FLOW CONNECTION	1
12	25-00405	DIVERTER VALVE PLASTIC BODY	1
13	25-00491	FILLING TAP	1
14	25-00498	WASHER Ø18.5x10x2 EPDM 70sh	1
15	25-00505	PUMP GRUNDFOS UPS 15-58 AOKR 1x 115V 60Hz 3H	1
16	34001LA	BRASS BACKNUT 1/2" E.24x5	1
17	43002LA	WASHER Ø 18.5x10.2x2 1/2" -AFM34	2
18	43003LA	WASHER Ø15x8x2 3/8" -AFM34	1
19	43007LA	WASHER D.11.5x6x2 1/8" -AFM34	2
20	43145LA	DIVERTER VALVE O-RING M.PLEX	1
21	43150LA	EPDM O-RING 14X30 FOR BRASS CONNECTIONS M.PLEX	1
22	45-00048	2-WAY VALVE BY-PASS CONNECTION	1
23	54022LA	ZINC-PLATED STEEL FIXING CLIPMULTIPLEX	1
24	55-00191	NIPPLES 3/4" w/O-RING	1
25	55-00215	FIXING CLIP - STAINLESS STEEL	4
26	55-00398	NIPLES 1/2" w/NON RETURN VALVE SIDE	1
27	56009LA	NIPPLE 1/2"-1/2" E.22x35 RKA/GAS VALVE ELBOW	1
28	56087LA	CL 2510 1/4"-1/2" CONNECTION	1
29	61004LP	FLOWSWITCH PISTON	1
30	61005LA	PISTON STOP	1
31	96018LA	NON-RETURN VALVE	1
32	96073LA	DIVERTER VALVE ACTUATORUL/CSA	1

Disegnatore	Rev.	data revisione	Autore revisione	Descrizione revisione
cristian.pazzagliani				
Modificato				
cristian.pazzagliani				
Data di creazione	Scala	Materiale	Sp.	Peso (Kg)
19/04/2016	13			728.234
Note				
Descrizione completa HYDRAULIC GROUP R2K 28 - CANADA				
 tecnologia nel calore dal 1959				
Codice				Revisione
26-00427				00





N°	Code	Description	Qty
1	31385LA	POWER SUPPLY CABLE UL/CSA	1
2	31388LA	FRAME-PRINTED CIRCUIT BOARD CABLE UL/CSA	1
3	31396LA	EXHAUST FAN CABLE	1
4	31428LA	FLWSWITCH MICRO LEAD UL/CSA	1
5	40-00092	PUMP/3 WAY VALVE CABLE UL/CSA	1
6	40-00147	PRINTED CIRCUIT BOARD PREMIX	1
7	40-00149	THERMOFUSE CABLE - R2-UL/CSA	1
8	40-00152	WATER PRESSURE SWITCH CABLE	1
9	40-00223	IGNITION TRANSF. CABLE	1
10	40-00250	GAS VALVE CABLE	1
11	40-00277	D.H.W/HEATING SENSOR CABLE	1
12	40-00311	THERMOFUSE CABLE	1
13	40-00313	POWER SUPPLY / EXHAUST FAN CABLE	1
14	45-00002	CONTROL PANEL R1	1
15	45-00007	CONTROL PANEL FRONT COVER R2	1
16	45-00008	2 BUTTONS GROUP R2 PANEL	2
17	45-00009	3 BUTTONS GROUP R2 PANEL	1
18	45-00036	CONTROL PANEL COVER R2 GRAY	1
19	64092LA	CONTROL PANEL BACK PLATE OBLO' - 138006	1
20	64162LA	TERMINAL BLOCK COVER 120V-60HZ	1

Disegnatore	Rev.	data revisione	Autore revisione	Descrizione revisione
cristian.pazzaglini				
Modificato				
cristian.pazzaglini				
Data di creazione	Scala	Materiale	Sp.	Peso (Kg)
16/02/2016	12			375.129
Note				
Descrizione completa CONTROL PANEL COMPLETE R2K 24-28-34 CANADA				
 RADIANT BRUCIATORI s.p.a. 61025 Loc. Montelabbate (PS) - Via Pantanelli, 164 Tel. 0721/90791 (n. 4 linee r.a.) - Fax. 0721/9079299				Codice 41-00184
				Revisione 00



N°	Code	Description	Qty
1	13-00206	RADIANT HEAT EXCHANGER FRONT PANEL	1
2	13-00207	INTEGRATED HEAT EXCHANGER BACK PANEL	1
3	25-00312	O-RING EXCHANGER DOOR	1
4	30-00104	CERAMIC FIBRE - BOTTOM	1
5	30-00105	CERAMIC FIBRE-ROUND TYPE 20SP.	1
6	30-00131	CERAMIC AIRBED	1
7	35026LA	ELECTRODE WASHER	2
8	40-00127	IGNITION ELECTRODE ISO-USA.w/CABLE	1
9	40-00128	IONISATION ELECTRODE ISO-USA w/CABLE	1
10	55-00137	WASHER 74x61 sp.17 EPDM	1
11	73517LA	THERMO FUSE 102øC RED ISOTHERM. 1/4"	1

Disegnatore	Rev.	data revisione	Autore revisione	Descrizione revisione
francesco.bonetti	01	17/05/2016	Francesco Bonetti	diminuita altezza di 2,5 mm
Modificato				
crislian.pazzaglini				
Data di creazione	Scala	Materiale	Sp.	Peso (Kg)
11/12/2013	14			1910.127
Note				
Descrizione completa				
CONDENSING EXCHANGER RADIANT SK2 28				
				Revisione
tecnologia nel calore dal 1959				
			01	