
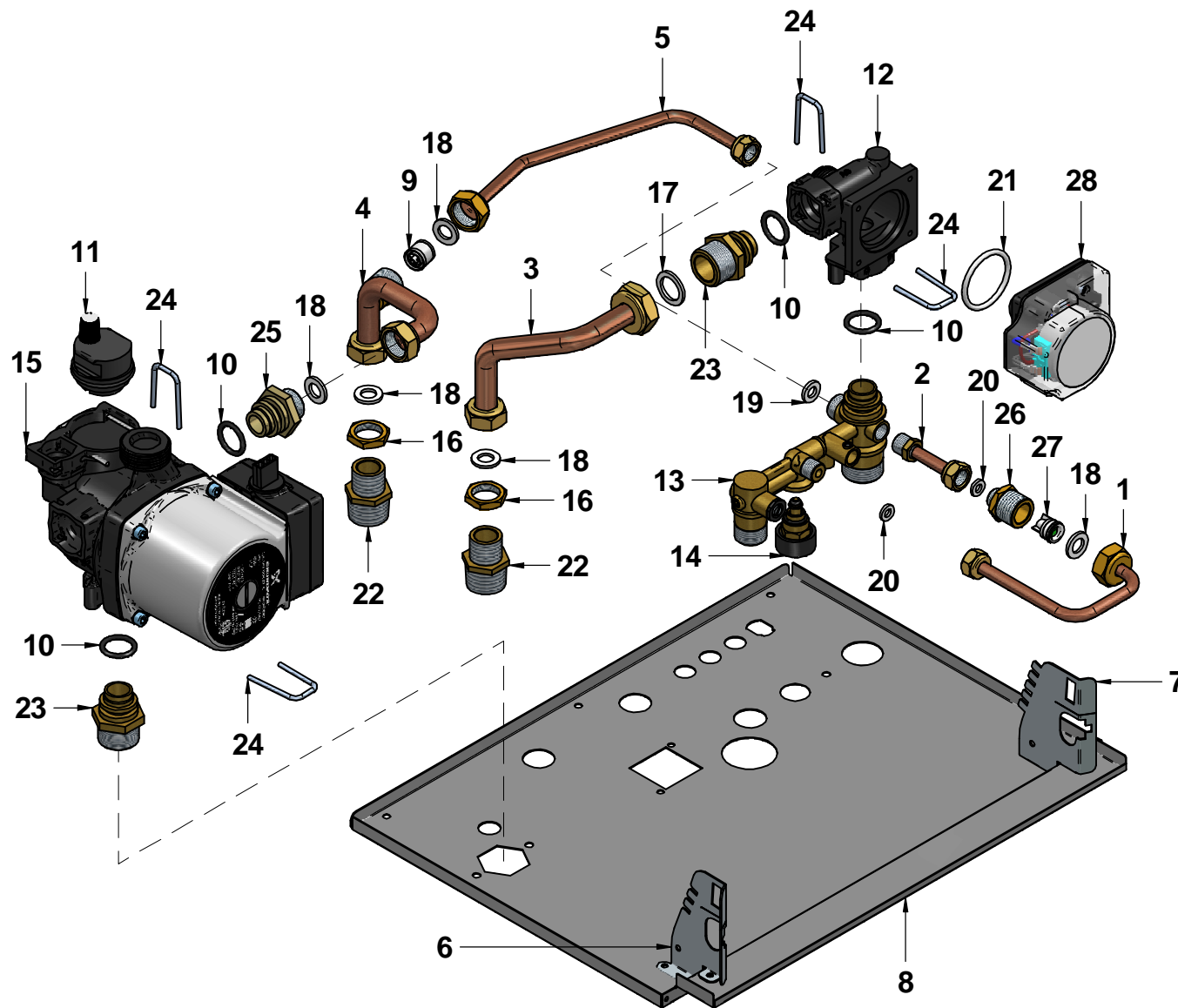




N°	Code	Description	Qty
1	15-01038	FRAME	1
2	15-01040	FRAME RIGHT/LEFT HOOK	2
3	15-01042	CONDESATE SIPHON FIXING PLATE	1
4	15-01043	CONTROL PANEL LEFT SIDE BRACKET	1
5	15-01044	CONTROL PANEL RIGHT SIDE BRACKET	1
6	15-01048	EXPANSION VESSEL FIXING BRACKET	1
7	15-01075	CASING RIGHT SIDE PANEL	1
8	15-01076	CASING LEFT SIDE PANEL	1
9	15-01105	EXPANSION VESSEL BOTTOM BRACKET	1
10	15-01222	FLUE EXHAUST CAP	1
11	15-01309	ROOM-SEALED CHAMBER BOTTOM	1
12	15-01310	ROOM-SEALED CHAMBER TOP	1
13	15-01341	TRANSFORMER FIXING PLATE	1
14	35-00081	CASING FRONT PANEL	1
15	35-00082	INSULATION FRONT PANEL	1
16	35-00097	INSULATION ROOM-SEAL CHAMBER TOP	1
17	35-00098	INSULATION RIGHT/LEFT PANELS	2
18	43284LA	ALUMINIUM ADHESIVE FRONT PANEL	1

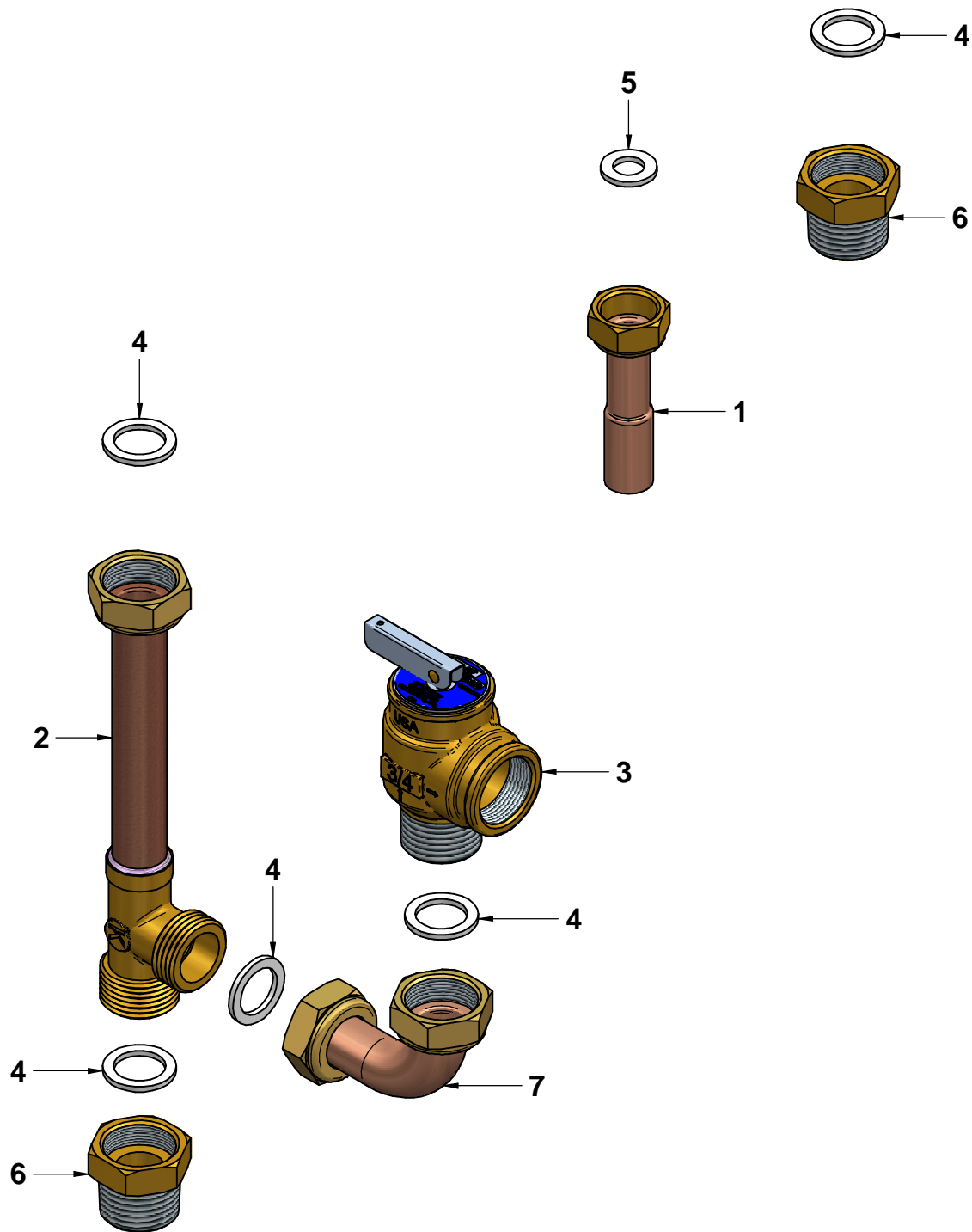
Disegnatore	Rev.	data revisione	Autore revisione	Descrizione revisione
cristian.pazzagliani	01	17/02/2017	cristian.pazzagliani	Cambiato gruppo idraulico
Modificato				
cristian.pazzagliani				
Data di creazione	Scala	Materiale	Sp.	Peso (Kg)
04/04/2016	16			15001661
Note				
Descrizione completa R1K 34/B COMBI-TECH MET CDN - CS R2 UL/CSA				
 tecnologia nel calore dal 1959				Revisione
				01
A341A782D501				01





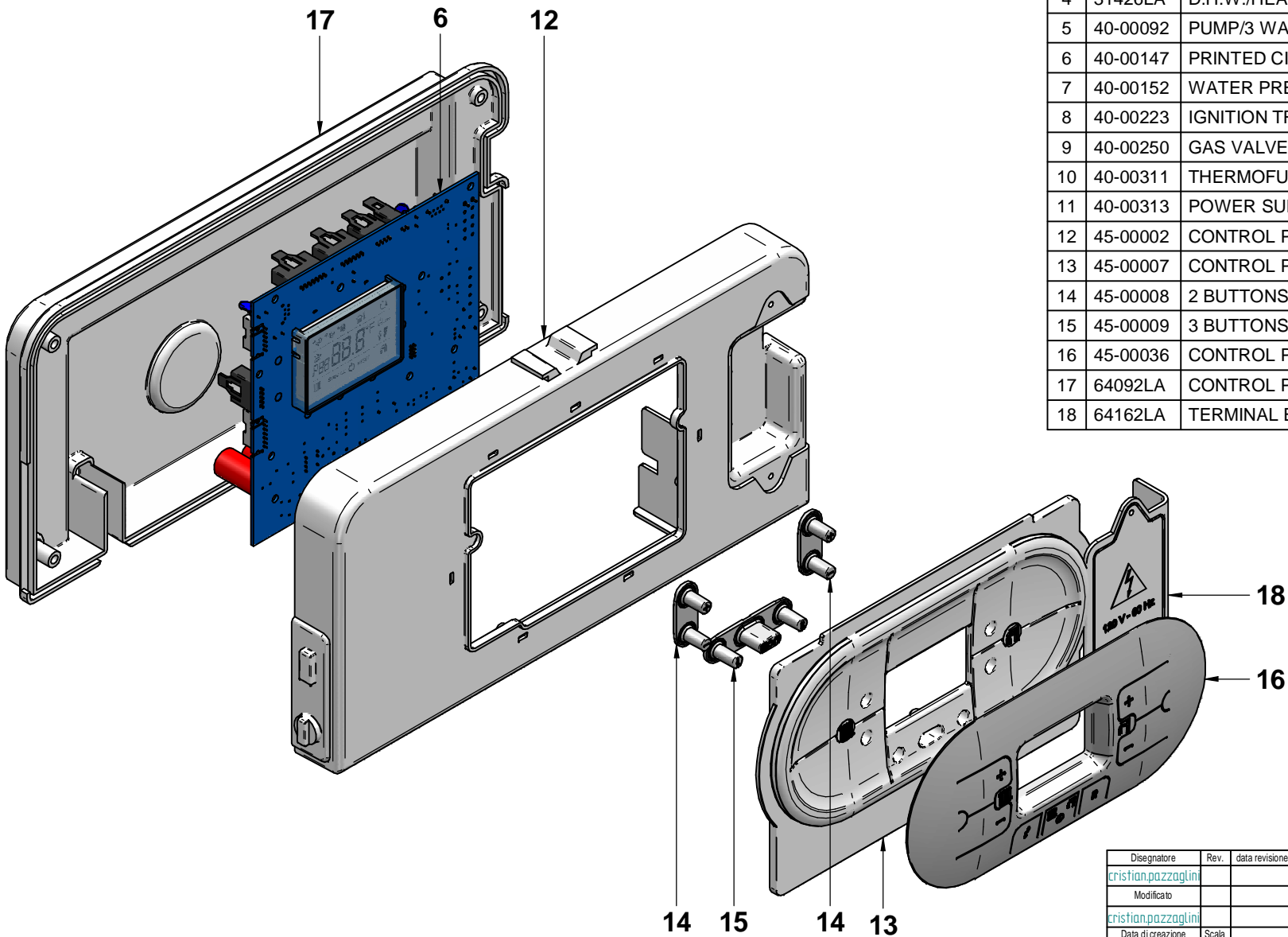
N°	Code	Description	Qty
1	12-01406	PIPE Ø 8 N.RET. VALVE FLOW	1
2	12-01407	PIPE Ø8 NOT RETURN VALVE L=57 STRAIGHT	1
3	12-02003	PIPE Ø14 HTG FLOW CYLINDER	1
4	12-02004	PIPE Ø14 RETURN CYLINDER	1
5	12-02005	PIPE Ø8 BY-PASS	1
6	15-01043	CONTROL PANEL LEFT SIDE BRACKET	1
7	15-01044	CONTROL PANEL RIGHT SIDE BRACKET	1
8	15-01309	ROOM-SEALED CHAMBER BOTTOM	1
9	25-00256	BY-PASS D.15	1
10	25-00269	PUMP/PUMP CONNECTION BODY OR 18,64x3,53 EPDM	4
11	25-00330	AIR VENT VALVE GRUNDFOSS	1
12	25-00405	DIVERTER VALVE PLASTIC BODY	1
13	25-00438	COLD WATER HEATING FLOW CONNECTION	1
14	25-00491	FILLING TAP	1
15	25-00505	PUMP GRUNDFOS UPS 15-58 AOKR 1x 115V 60Hz 3H	1
16	34001LA	BRASS BACKNUT 1/2" E.24x5	2
17	43001LA	WASHER Ø 23.5x17x2 3/4" -AFM34	1
18	43002LA	WASHER Ø 18.5x10.2x2 1/2" -AFM34	5
19	43003LA	WASHER Ø15x8x2 3/8" -AFM34	1
20	43007LA	WASHER D.11.5x6x2 1/8" -AFM34	2
21	43145LA	DIVERTER VALVE O-RING M.PLEX	1
22	55-00189	NIPPLE 1/2"-3/4" B.S.P.T. GAS VALVE	2
23	55-00191	NIPPLES 3/4" w/O-RING	2
24	55-00215	FIXING CLIP - STAINLESS STEEL	4
25	55-00398	NIPLES 1/2" w/NON RETURN VALVE SIDE	1
26	56087LA	CL 2510 1/4"-1/2" CONNECTION	1
27	96018LA	NON-RETURN VALVE	1
28	96073LA	DIVERTER VALVE ACTUATORUL/CSA	1

Disegnatore	Rev.	data revisione	Autore revisione	Descrizione revisione
cristian.pazzaglini	01	17/02/2017	cristian.pazzaglini	Variato percorso tubi
Modificato				
cristian.pazzaglini				
Data di creazione	Scala	Materiale		Sp.    Peso (Kg)
04/04/2016	13			730.192
Note				
Descrizione completa HYDRAULIC GROUP R1K 34/B - CANADA				
 tecnologia nel calore dal 1959				Revisione
				01
 26-00419				01



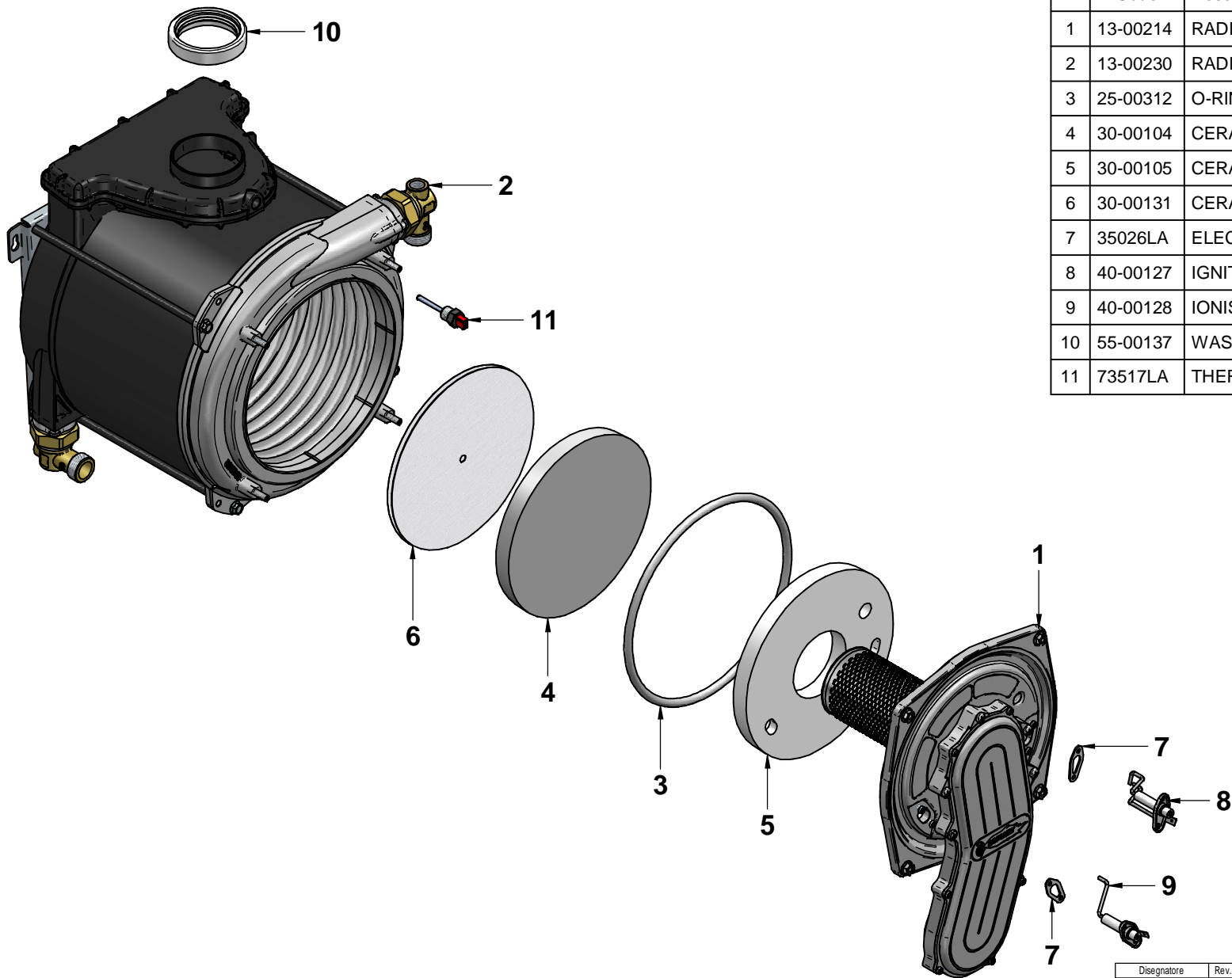
N°	Code	Description	Qty
1	12-00282	PIPE D.14/16x60	1
2	12-01451	PIPE Ø18 FOR SAFETY VALVE FITTINGS KIT	1
3	25-00247	SAFETY VALVE 3/4"M-3/4"F 30PSI - 1040705	1
4	43001LA	WASHER Ø 23.5x17x2 3/4" -AFM34	5
5	43002LA	WASHER Ø 18.5x10.2x2 1/2" -AFM34	1
6	55-00155	NIPPLES 3/4" BSTP CONICAL	2
7	83630LP	PIPE Ø18 HTG FLOW CONNECTION	1

Disegnatore	Rev.	data revisione	Autore revisione	Descrizione revisione
crislian.pazzagliani				
Modificato				
crislian.pazzagliani				
Data di creazione	Scala	Materiale	Sp.	Peso (Kg)
04/04/2016	1:1.5			3.499
Note				
Descrizione completa SAFETY VALVE FITTINGS KIT R1K/B CANADA				
 tecnologia nel calore dal 1959				Revisione
				00
 tecnologia nel calore dal 1959				Codice <b>12-01769</b>




N°	Code	Description	Qty
1	31385LA	POWER SUPPLY CABLE UL/CSA	1
2	31388LA	FRAME-PRINTED CIRCUIT BOARD CABLE UL/CSA	1
3	31396LA	EXHAUST FAN CABLE	1
4	31426LA	D.H.W./HEATING SENSOR CABLE 8M T. /B DT - UL/CSA	1
5	40-00092	PUMP/3 WAY VALVE CABLE UL/CSA	1
6	40-00147	PRINTED CIRCUIT BOARD PREMIX	1
7	40-00152	WATER PRESSURE SWITCH CABLE	1
8	40-00223	IGNITION TRANSF. CABLE	1
9	40-00250	GAS VALVE CABLE	1
10	40-00311	THERMOFUSE CABLE	1
11	40-00313	POWER SUPPLY / EXHAUST FAN CABLE	1
12	45-00002	CONTROL PANEL R1	1
13	45-00007	CONTROL PANEL FRONT COVER R2	1
14	45-00008	2 BUTTONS GROUP R2 PANEL	2
15	45-00009	3 BUTTONS GROUP R2 PANEL	1
16	45-00036	CONTROL PANEL COVER R2 GRAY	1
17	64092LA	CONTROL PANEL BACK PLATE OBLO' - 138006	1
18	64162LA	TERMINAL BLOCK COVER 120V-60HZ	1

Disegnatore	Rev.	data revisione	Autore revisione	Descrizione revisione
cristian.pazzaglini				
Modificato				
cristian.pazzaglini				
Data di creazione	Scala	Materiale	Sp.	Peso (Kg)
04/04/2016	12			375.199
Note				
Descrizione completa				
CONTROL PANEL COMPLETE				
R1K 24-28-34/B CANADA				
				Revisione
RADIANT BRUCIATORI s.p.a. 61025 Loc. Montelabbate (PS) - Via Pantanelli, 164 Tel. 0721/90791 (n. 4 linee r.a.) - Fax. 0721/9079299				Codice <b>41-00192</b>
				Revisione <b>00</b>



N°	Code	Description	Qty
1	13-00214	RADIANT HEAT EXCHANGER FRONT PANEL	1
2	13-00230	RADIANT HEAT EXCHANGER BACK PANEL	1
3	25-00312	O-RING EXCHANGER DOOR	1
4	30-00104	CERAMIC FIBRE - BOTTOM	1
5	30-00105	CERAMIC FIBRE-ROUND TYPE 20SP.	1
6	30-00131	CERAMIC AIRBED	1
7	35026LA	ELECTRODE WASHER	2
8	40-00127	IGNITION ELECTRODE ISO-USA.w/CABLE	1
9	40-00128	IONISATION ELECTRODE ISO-USA w/CABLE	1
10	55-00137	WASHER 74x61 sp.17 EPDM	1
11	73517LA	THERMO FUSE 102°C RED ISOTHERM. 1/4"	1

Disegnatore	Rev.	data revisione	Autore revisione	Descrizione revisione
francesco.bonetti				
Modificato				
crisian.pazzaglini				
Data di creazione	Scala	Materiale	Sp.	Peso (Kg)
25/02/2015	14			1992.017
Note				
Descrizione completa CONDENSING EXCHANGER RADIANT SK1 34				
				Revisione
tecnologia nel calore dal 1959				
Codice			Revisione	
30-00191			00	