

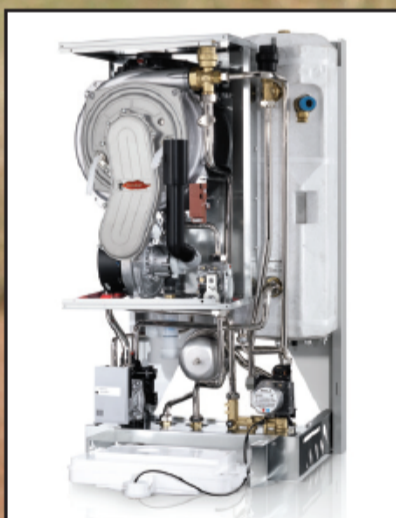
BIG Small Spaces. FEATURES

96% AFUE! Radiant™ delivers big boiler comfort wherever clearance is a challenge. Our 24KW series delivers 99,000 btu's of power with 12" venting clearances and its fully removable cabinet panels means easy servicing in confined spaces. Whether it's a true combi boiler you're looking for, or a hybrid-combi with on-board DHW storage, Radiant has the solution.



R2K 24

- Patented CombiTech System
- Tankless DHW
- 3.5/ 2.4 gpm of DHW (54°/77° Δt)
- 100' of 2" 636 PVC venting
- 12" vent clearance



R2KA 24/20

- Patented DualTech system
- Integrated 20 litre indirect tank
- Up to 224 gal. first hour delivery (@77°Δt)
- 3.7 gpm (@77°Δt)
- DHW ready when you are
- Eliminates "cold water sandwich"
- 12" vent clearance

Up to 100' of 2" PVC Venting



See it. Believe it.

radianthydronics.com



Thermal Hydronic Supply Ltd.
North American Distributor
thermalhydronics.com