


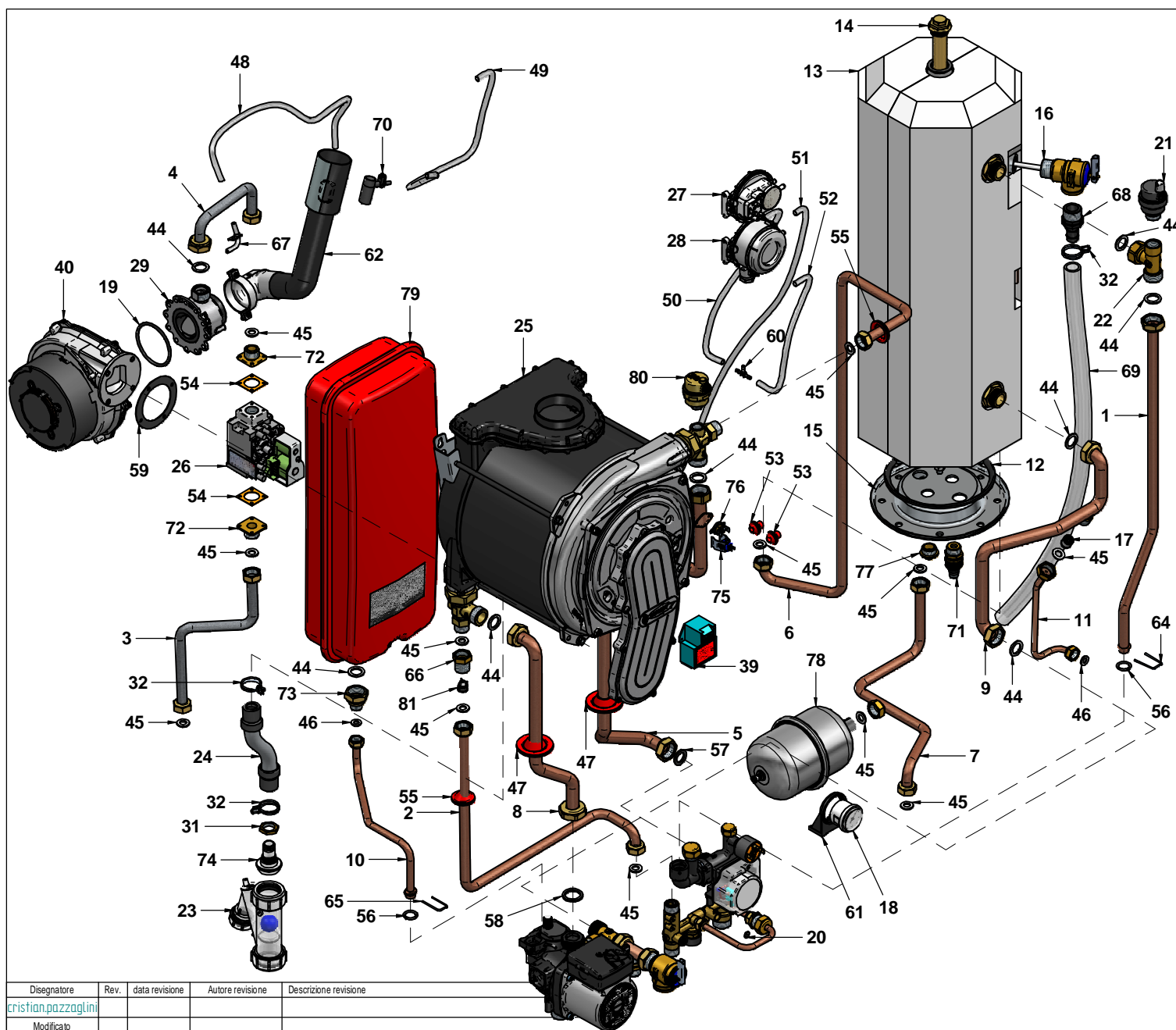
N°	Code	Description	Qty
1	15-00996	TRANSFORMER FIXING PLATE	1
2	15-01110	FRAME SUPPORT RIGHT/BOTTOM SIDE RKA25	1
3	15-01111	ROOM-SEALED CHAMBER BACK PANEL	1
4	15-01112	FRAME SUPPORT RIGHT/BOTTOM SIDE RKA25	1
5	15-01115	BOTTOM BOILER PLATE	1
6	15-01116	ROOM-SEALED CHAMBER COVER	1
7	15-01117	ROOM-SEALED CHAMBER LEFT SIDE PANEL	1
8	15-01132	CONTROL PANEL LEFT SIDE BRACKET	1
9	15-01142	ROOM-SEALED CHAMBER RIGHT SIDE PANEL CLOSURE PLATE	1
10	15-01222	FLUE EXHAUST CAP	1
11	15-01245	ROOM- SEALED CHAMBER BOTTOM	1
12	15-01251	CONTROL PANEL RIGHT SIDE BRACKET	1
13	15-01316	ROOM-SEALED CHAMBER TOP	1
14	15-01398	ROOM-SEALED CHAMBER RIGHT SIDE PANEL	1
15	35-00094	CASING FRONT PANEL	1
16	35-00095	CASING RIGHT SIDE PANEL	1
17	35-00096	CASING LEFT SIDE PANEL	1
18	35-00105	ROOM-SEALED CHAMBER COVER INSULATION	1
19	43290LA	ALUMINIUM ADHESIVE FRONT SIDE	1
20	74093LP	WALL HANGING BRACKET MAXICOMFORT	1
21	74233LP	EXPANSION VESSEL HOOK BRACKET	1
22	79107LP	FRAME	1

Disegnatore	Rev.	data revisione	Autore revisione	Descrizione revisione
crislian.pazzaglino				
Modificato				
crislian.pazzaglino				
Data di creazione	Scala	Materiale	Sp.	Peso (Kg)
16/12/2015	17.			6399.126
Note				
Descrizione completa R2KA 34/20 DUAL-TECH MET CDN - CS R2 UL/CSA				



tecnologia nel calore dal 1959

Codice Revisione  
A341A472A531 00



N°	Code	Description	Qty
1	12-01400	PIPE Ø14 BURNER/CYLINDER COLD WATER INLET	1
2	12-01405	PIPE Ø14 COLD WATER	1
3	12-01574	PIPE Ø14 GAS INLET	1
4	12-01578	PIPE Ø14 GAS OUTLET ST. STEEL	1
5	12-01620	PIPE Ø18 HTG FLOW	1
6	12-01622	PIPE Ø14 BURNER/COLD WATER INLET	1
7	12-01669	PIPE Ø14 HOT WATER	1
8	12-01670	PIPE Ø18 HTG RETURN	1
9	12-01671	PIPE Ø14 CYLINDER OUTLET/CIRCULATING PUMP	1
10	12-01672	PIPE Ø10 EXPANSION VESSEL	1
11	12-01904	PIPE Ø8 BY-PASS	1
12	20034LA	WASHER FOR CYLINDER LT.25/45 FLANGE	1
13	20051LA	CYLINDER 14 LT. -STAINLESS STEEL	1
14	20071LA	ANODE FOR 14LT. TANK (NO INSP.)	1
15	20075LA	CYLINDER FLANGE	1
16	25-00110	CYLINDER SAFETY VALVE 3/4" M-F	1
17	25-00256	BY-PASS D.15	1
18	25-00363	WATER PRESSURE GAUGE-QUICK CONNECTION	1
19	25-00386	O-RING 62.00x3 VENTURI POLIDORO	1
20	25-00404	OR 5.00x2 EPDM	1
21	25-00431	AIR VENT VALVE 1/2" CST	1
22	26258LA	"T" CONNECTION-CAP 3/4"-3/4"M- 1/2"F	1
23	27044LA	CONDENSATE TRAP RPK	1
24	30-00129	CONDENSATE DRAIN PIPE	1
25	30-00177	CONDENSING EXCHANGER RADIANT R2KA 34	1
26	30-00205	SIGMA GAS VALVE 120V 60Hz 10/60°C	1
27	30-00254	AIR PRESSURE SWITCH 10/20 Pa	1
28	30-00262	AIR PRESSURE SWITCH 730Pa off - 680Pa on	1
29	30-00265	NATURAL GAS VENTURI	1
30	31455LA	MAIN PCB / FAN CABLE UL/CSA	1
31	34001LA	BRASS BACKNUT 1/2" E.24x5	1
32	38525LA	BIFILAR CLAMP SPRING TYPE 24.4-26	3
33	40-00060	SAFETY THERMOSTAT CABLE	1
34	40-00087	CABLE CONDENS. TRAP/FRAME ASSY	1
35	40-00088	CABLE CONDENS. IONISATION	1
36	40-00106	IGNITION ELECTRODE CABLE	1
37	40-00125	IGNITION TRANSFORMER CABLE ASTOSS	1
38	40-00155	FAN POWER SUPPLY CABLE UL/CSA	1
39	40-00266	IGNITION TRANSFORMER UL/CS ZAG 2 XV - 07000060	1
40	40-00267	EXHAUST FAN RG128/1300 -55667.11840	1
41	40-00275	CABLE GAS VALVE / AIR PRESSURE SWITCH	1
42	40-00276	D.H.W/HEATING SENSOR CABLE	1
43	40-00300	AIR PRESSURE SWITCHES CABLE	1
44	43001LA	WASHER Ø 23.5x17x2 3/4" -AFM34	8
45	43002LA	WASHER Ø 18.5x10.2x2 1/2" -AFM34	12
46	43003LA	WASHER Ø15x8x2 3/8" -AFM34	2
47	43009LA	FB10/1 SYLICON RED WASHER ROUND TYPE	2
48	43018LA	SYLICON/TRANSPARENT PIPE Ø 8x4	1
49	43018LA	SYLICON/TRANSPARENT PIPE Ø 8x4	1
50	43018LA	SYLICON/TRANSPARENT PIPE Ø 8x4	1
51	43018LA	SYLICON/TRANSPARENT PIPE Ø 8x4	1
52	43018LA	SYLICON/TRANSPARENT PIPE Ø 8x4	1
53	43042LA	RED SYLICON WASHER FOR SYLICON PIPES D.8x4	2
54	43045LA	WASHER 33x33x1.5 Ø 19	2
55	43117LA	SYLICON PIPE-WASHER D.14	2
56	43150LA	EPDM O-RING 14X30 FOR BRASS CONNECTIONS	2
57	43159LA	WASHER EPDM 80 SH M.PLEX 16x24x2,5 3/4"	1
58	43208LA	WASHER 23x30x3sp EPDM 80sh 1"	1
59	43278LA	FLANGE WASHER D.82 EPDM	1
60	45-00001	T CONNECTION 3/8" D.3.5 DOUBLE PRESSURE SWITCH	1
61	45-00042	WATER PRESSURE GAUGE FIXING PLATE	1
62	50-00152	AIR INTAKE TUBE - COMBI-TECH	1
63	50088LA	ELECTRIC PLUG 3xAWG18 BLACK 1,5mt	1
64	54022LA	ZINC-PLATED STEEL FIXING CLIPMULTIPLEX	1
65	55-00227	EXPANSION VESSEL PIPE FIXING CLIP	1
66	55-00382	NIPPLES 1/2" MF	1
67	55-00458	AIR PRESSURE POINT	1
68	55-00506	RUBBER HOLDER 3/4"	1
69	55-00507	ANTIFREEZE PIPE Ø24x18	1
70	57525LA	VENTURI NEGATIVE PRESSURE POINT 2008	1
71	67003LA	DRAIN VALVE RSC/G 1/2"	1
72	68014LA	1/2" CONNECTION W/THRED	2
73	68121NA	REDUCTION 3/4"-3/8 MIDY	1
74	68244LA	SIPHON CONNECTION 2006	1
75	73516LA	HTG CLIP SENSOR X PIPE 17/18mm BLUE	1
76	86006LA	SAFETY THERMOSTAT 95gr(ø)E.	1
77	89195NA	BRASS CAP 1/2" M	1
78	95004LA	EXPANSION VESSEL LT.1 STAINL.STEEL	1
79	95006LA	EXPANSION VESSEL LT.10	1
80	96012LA	AUTOMATIC AIR VENT VALVE 3/8"	1
81	96018LA	NON-RETURN VALVE	1

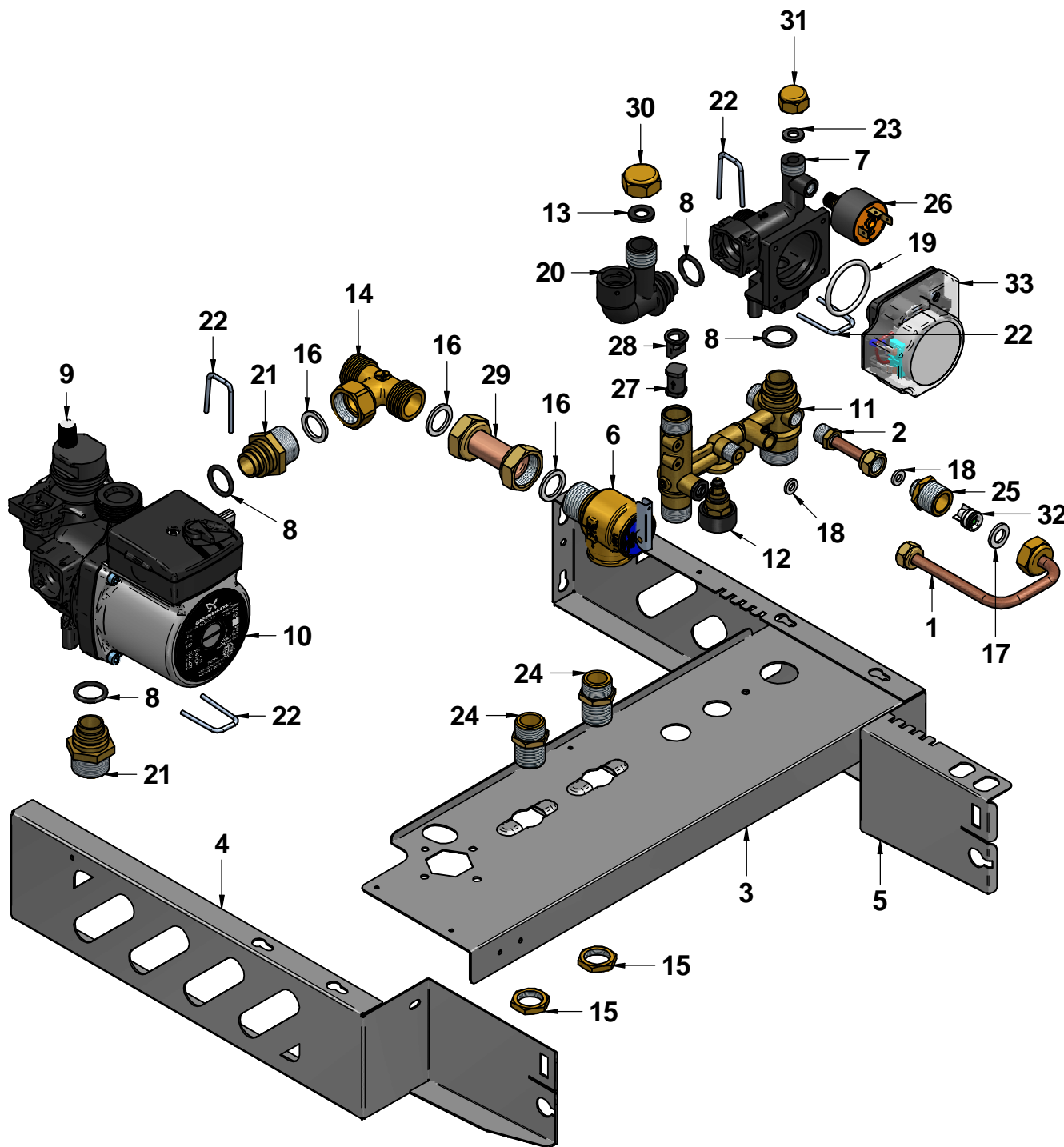
Disegnatore	Rev.	data revisione	Autore revisione	Descrizione revisione
cristian.pazzaglini				
Modificato				
cristian.pazzaglini				
Data di creazione	Scala	Materiale	Sp.	Peso (Kg)
16/12/2015	16			6399.126
Note				
Descrizione completa				
<b>R2KA 34/20 DUAL-TECH MET</b>				
<b>CDN - CS R2 UL/CSA</b>				

tecnologia nel calore dal 1959

Codice Revisione

**A341A472A531 00**

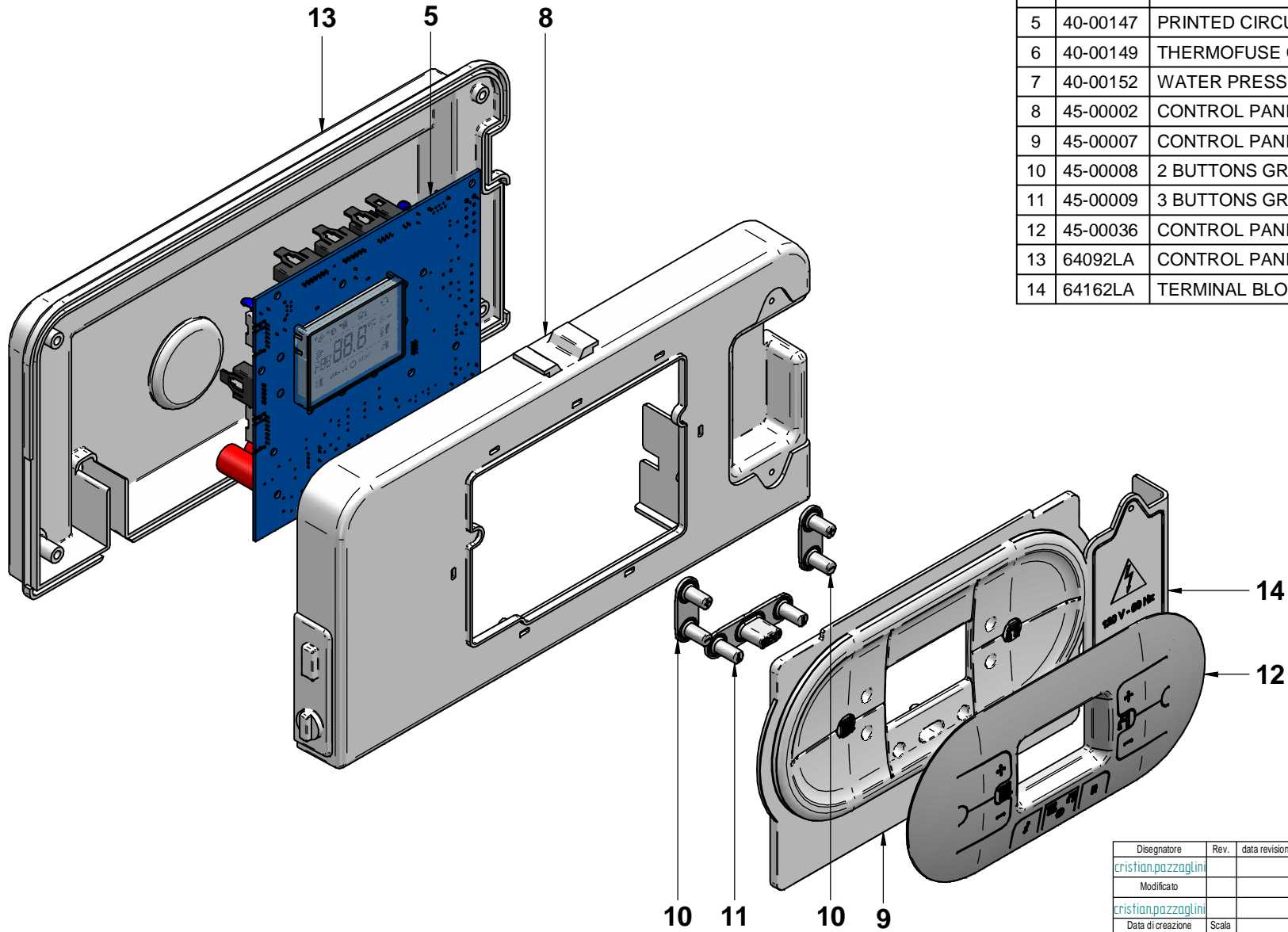
OGNI ELEMENTO E' MARCHIO NON SOLO REGISTRATO, MA DOTTO DI BREVETTO E DIRITTO DI PROPRIETA' INTELLETTUALE. IL MARCHIO E' UNO DEI CRITERI DI IDENTIFICAZIONE DEI PRODOTTI. IL MARCHIO E' UNO DEI CRITERI DI IDENTIFICAZIONE DEI PRODOTTI. IL MARCHIO E' UNO DEI CRITERI DI IDENTIFICAZIONE DEI PRODOTTI. IL MARCHIO E' UNO DEI CRITERI DI IDENTIFICAZIONE DEI PRODOTTI.




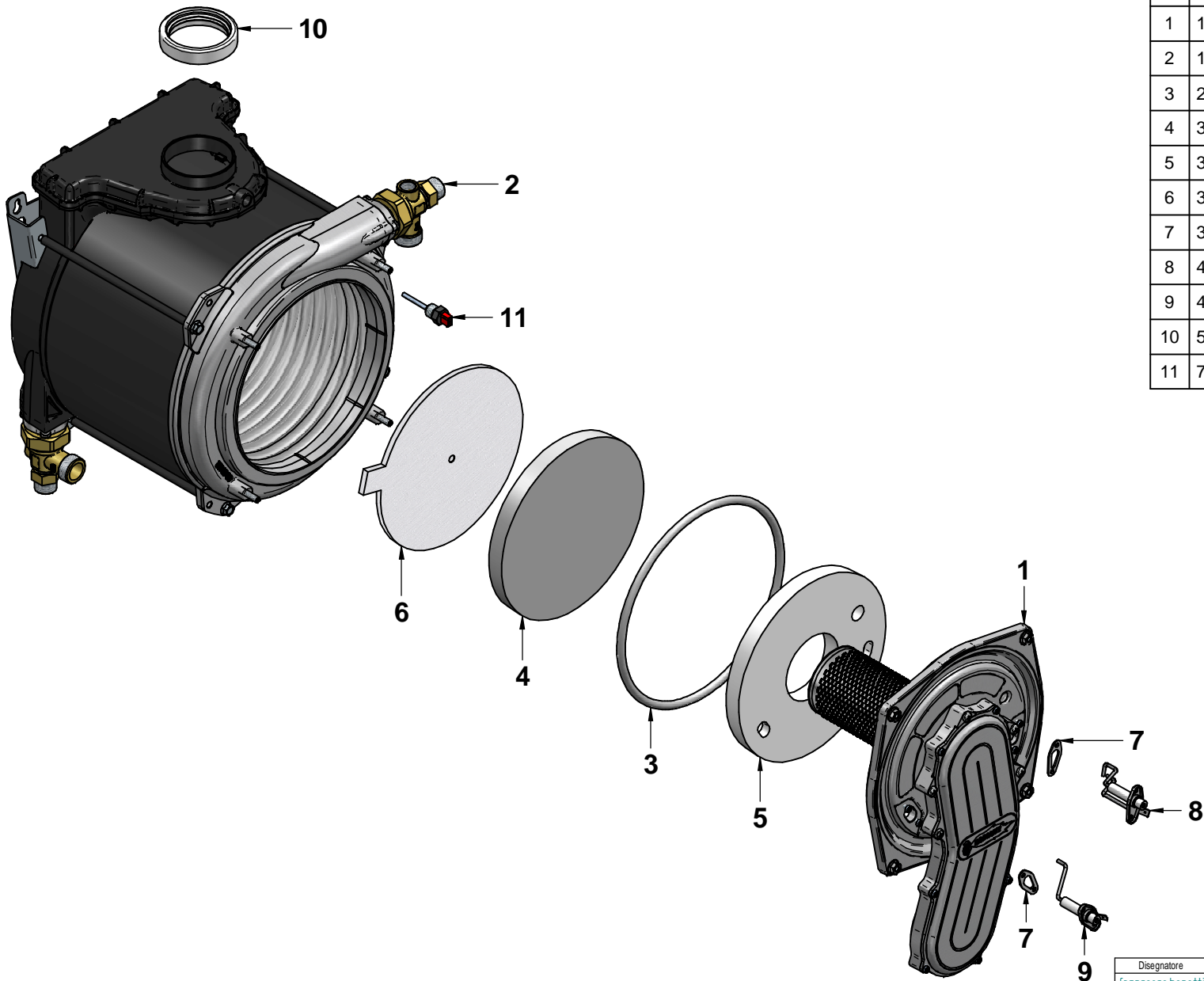
N°	Code	Description	Qty
1	12-01406	PIPE Ø 8 N.RET. VALVE FLOW	1
2	12-01407	PIPE Ø8 NOT RETURN VALVE L=57 STRAIGHT	1
3	15-01115	BOTTOM BOILER PLATE	1
4	15-01132	CONTROL PANEL LEFT SIDE BRACKET	1
5	15-01251	CONTROL PANEL RIGHT SIDE BRACKET	1
6	25-00247	SAFETY VALVE 3/4"M-3/4"F 30PSI - 1040705	1
7	25-00257	DIVERTER VALVE PLASTIC BODY	1
8	25-00269	PUMP/PUMP CONNECTION BODY OR 18,64x3,53 EPDM	4
9	25-00330	AIR VENT VALVE GRUNDFOSS	1
10	25-00331	PUMP AOKR GRUNFOS UPS 15-58	1
11	25-00401	COLD WATER/HEATING FLOW CONNECTION	1
12	25-00491	FILLING TAP	1
13	25-00498	WASHER Ø18.5x10x2 EPDM 70sh	1
14	26055LA	3/4" "T" CONNECTION CYL. EXP. VESSEL	1
15	34001LA	BRASS BACKNUT 1/2" E.24x5	2
16	43001LA	WASHER Ø 23.5x17x2 3/4" -AFM34	3
17	43002LA	WASHER Ø 18.5x10.2x2 1/2" -AFM34	1
18	43007LA	WASHER D.11.5x6x2 1/8" -AFM34	2
19	43145LA	DIVERTER VALVE O-RING M.PLEX	1
20	45-00048	2-WAY VALVE BY-PASS CONNECTION	1
21	55-00191	NIPPLES 3/4" w/O-RING	2
22	55-00215	FIXING CLIP - STAINLESS STEEL	4
23	55-00229	WASHER 3/8" Ø15x8x2	1
24	56009LA	NIPPLE 1/2"-1/2" E.22x35 RKA/GAS VALVE ELBOW	2
25	56087LA	CL 2510 1/4"-1/2" CONNECTION	1
26	59015LA	WATER PRESSURE SWITCH	1
27	61004LP	FLOWSWITCH PISTON	1
28	61005LA	PISTON STOP	1
29	83192LP	PIPE D.18 CYLINDER-"T" CONNECT MAXICOMFORT	1
30	89023LA	BRASS CAP 1/2" E. 24	1
31	89133LA	BRASS CAP 3/8" F E.19 Fi.15	1
32	96018LA	NON-RETURN VALVE	1
33	96073LA	DIVERTER VALVE ACTUATORUL/CSA	1

Disegnatore	Rev.	data revisione	Autore revisione	Descrizione revisione
cristian.pazzagliani				
Modificato				
cristian.pazzagliani				
Data di creazione	Scala	Materiale	Sp.	Peso (Kg)
16/12/2015	13			4.337
Note				
Descrizione completa				
CONTROL PANEL COMPLETE				
R2KA 24-28-34/20 CANADA				
tecnologia nel calore dal 1959				
Codice				Revisione
26-00393				00

N°	Code	Description	Qty
1	31385LA	POWER SUPPLY CABLE UL/CSA	1
2	31388LA	FRAME-PRINTED CIRCUIT BOARD CABLE UL/CSA	1
3	31428LA	FLOWSWITCH MICRO LEAD UL/CSA	1
4	40-00092	PUMP/3 WAY VALVE CABLE UL/CSA	1
5	40-00147	PRINTED CIRCUIT BOARD PREMIX	1
6	40-00149	THERMOFUSE CABLE - R2-UL/CSA	1
7	40-00152	WATER PRESSURE SWITCH CABLE	1
8	45-00002	CONTROL PANEL R1	1
9	45-00007	CONTROL PANEL FRONT COVER R2	1
10	45-00008	2 BUTTONS GROUP R2 PANEL	2
11	45-00009	3 BUTTONS GROUP R2 PANEL	1
12	45-00036	CONTROL PANEL COVER R2 GRAY	1
13	64092LA	CONTROL PANEL BACK PLATE OBLO' - 138006	1
14	64162LA	TERMINAL BLOCK COVER 120V-60HZ	1




Disegnatore	Rev.	data revisione	Autore revisione	Descrizione revisione
cristian.pazzaglini				
Modificato				
cristian.pazzaglini				
Data di creazione	Scala	Materiale	Sp.	Peso (Kg)
16/12/2015	12			375.197
Note				
Descrizione completa <b>QUADRO COMPLETO ASSEMBLATO</b> <b>R2KA 24-28-34/20 CANADA</b>				
 tecnologia nel calore dal 1959				Codice <b>41-00182</b>
				Revisione <b>00</b>



N°	Code	Description	Qty
1	13-00214	RADIANT HEAT EXCHANGER FRONT PANEL	1
2	13-00217	RADIANT HEAT EXCHANGER BACK PANEL	1
3	25-00312	O-RING EXCHANGER DOOR	1
4	30-00104	CERAMIC FIBRE - BOTTOM	1
5	30-00105	CERAMIC FIBRE-ROUND TYPE 20SP.	1
6	30-00131	CERAMIC AIRBED	1
7	35026LA	ELECTRODE WASHER	2
8	40-00127	IGNITION ELECTRODE ISO-USA.w/CABLE	1
9	40-00128	IONISATION ELECTRODE ISO-USA w/CABLE	1
10	55-00137	WASHER 74x61 sp.17 EPDM	1
11	73517LA	THERMO FUSE 102øC RED ISOTHERM. 1/4"	1

Disegnatore	Rev.	data revisione	Autore revisione	Descrizione revisione
francesco.bonetti				
Modificato				
crislian.pozzaglini				
Data di creazione	Scala	Materiale	Sp.	Peso (Kg)
12/01/2015	14			2294,797
Note				
Descrizione completa CONDENSING EXCHANGER SK2 R2KA 34				



tecnologia nel calore dal 1959

Codice	Revisione
30-00177	00