

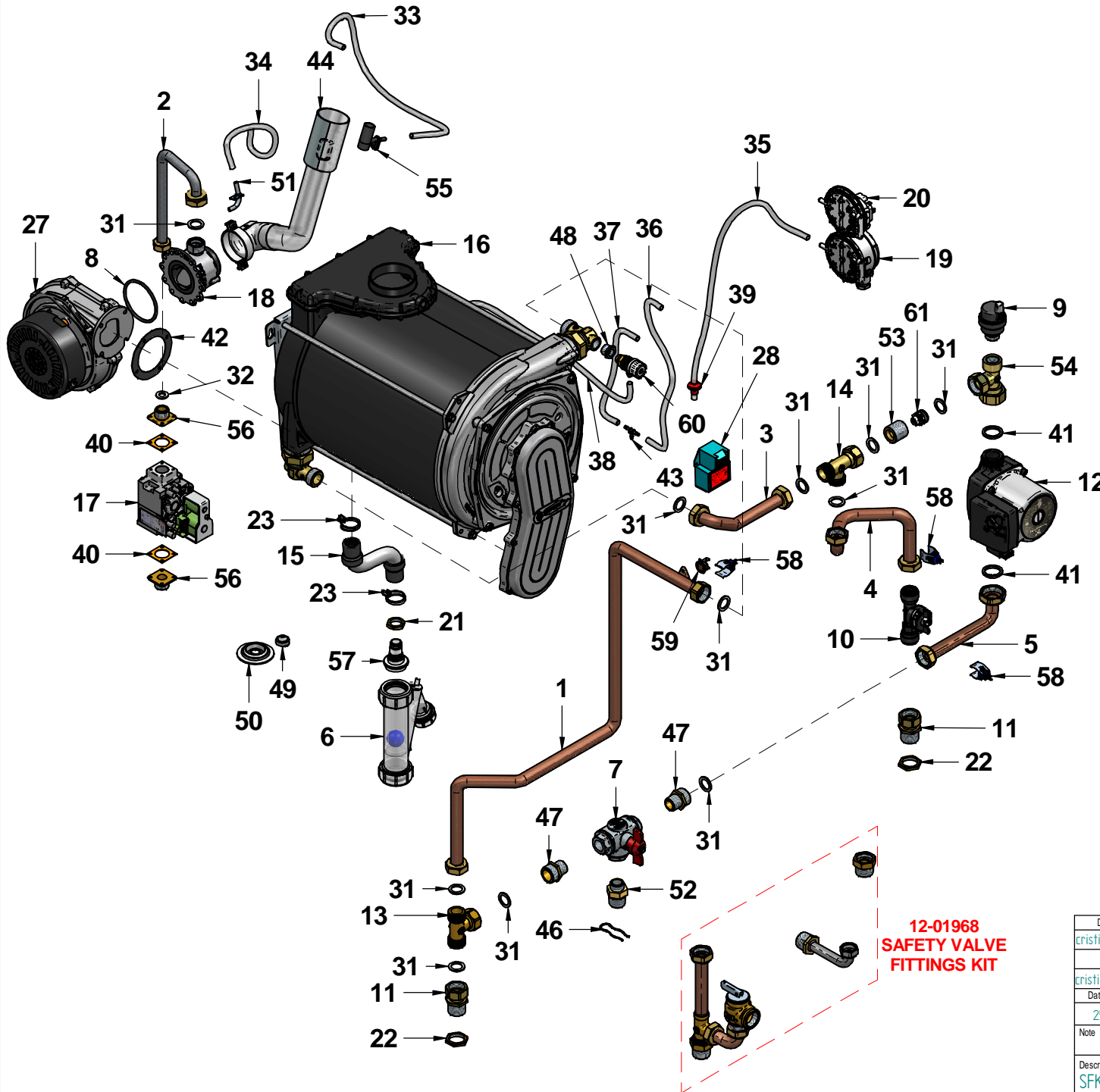
N°	Code	Description	Qty
1	12-01515	FRAME ASSEMBLY COMPLETE	1
2	12-02102	ROOM-SEALED CHAMBER BOTTOM PLATE	1
3	15-01043	CONTROL PANEL LEFT SIDE BRACKET	1
4	15-01044	CONTROL PANEL RIGHT SIDE BRACKET	1
5	15-01077	ROOM-SEALED CHAMBER TOP	1
6	15-01078	CASING RIGHT SIDE PANEL	1
7	15-01079	CASING LEFT SIDE PANEL	1
8	15-01081	CONDENSATE SIPHON FIXING PLATE	1
9	15-01228	WALL HANGING BRACKET	1
10	15-01250	BURNER SUPPORT BRACKET	1
11	15-01382	TRASFORMER FIXING PLATE	1
12	15-01609	CIRCULATING PUMP SUPPORT BRACKET	1
13	15-01610	SPACER	1
14	35-00082	INSULATION FRONT PANEL	1
15	35-00090	INSULATION TOP PANEL	1
16	35-00091	INSULATION CASING SIDE PANELS	2
17	35-00092	CASING FRONT PANEL	1
18	50-00153	EXHAUST ADAPTOR PP 60x80 3"x30	1
19	50-00154	AIR INTAKE ADAPTOR PP 60x80 -3"	1
20	50-00155	FLUE INSPECTION KIT WASHER	1
21	50-00175	AIR INTAKE WASHER	1

Disegnatore	Rev.	data revisione	Autore revisione	Descrizione revisione
cristian.pazzaglini	01	11/10/2017	cristian.pazzaglini	Aggiunta staffa supporto circ. e nuovo distanz. muro
Modificato				
cristian.pazzaglini				
Data di creazione	Scala	Materiale	Sp.	Peso (Kg)
25/05/2017	16			12258,135
Note				

Descrizione completa  
**SFK 55 FLOW-TECH**  
 - CS R2 CDN - UL/CSA


**RADIANT**  
 tecnologia nel calore dal 1959

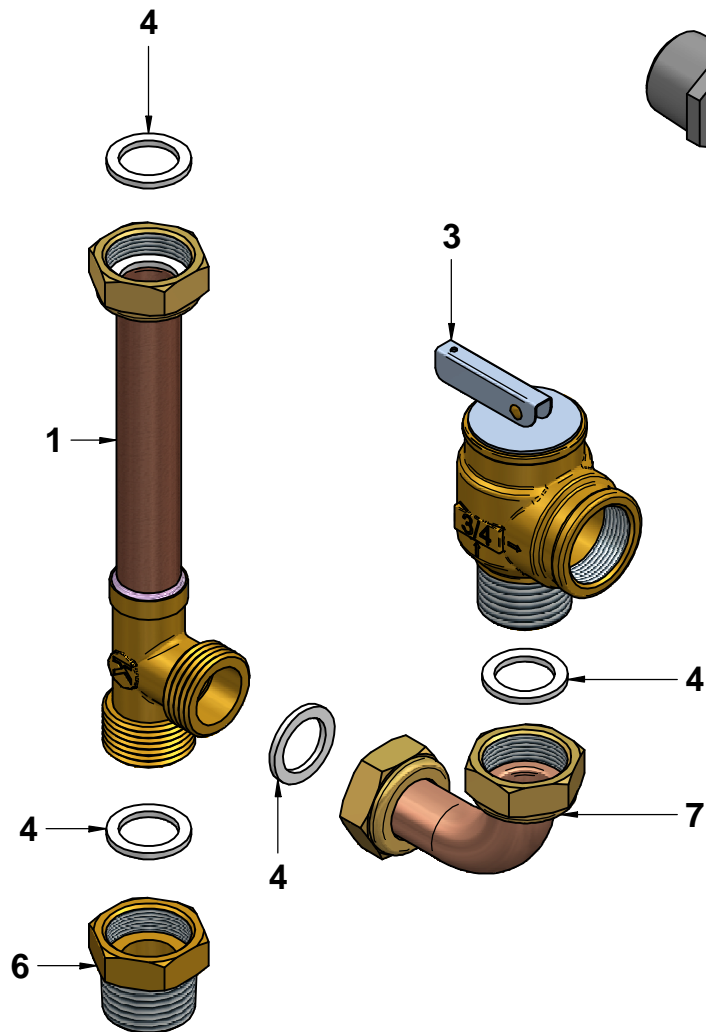
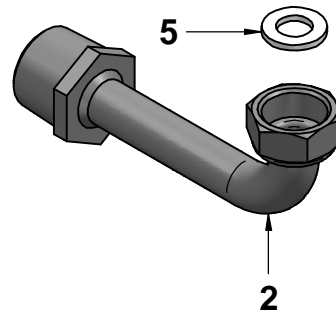
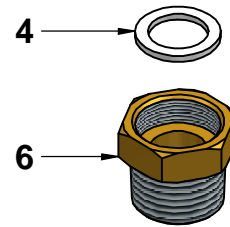
Codice Revisione  
**A345A582B601** 01




N°	Code	Description	Qty
1	12-01517	PIPE Ø18 HOT WATER	1
2	12-01590	PIPE Ø14 GAS OUTLET	1
3	12-01624	PIPE Ø18 COLD WATER "T"CONN./ HEAT EXCHANGER	1
4	12-01625	PIPE Ø18 DHW COLD FLOW/CONN. T	1
5	12-01993	PIPE Ø18 BY-PASS	1
6	25-00065	CONDENSATE TRAP - pp	1
7	25-00382	3 WAY 1/2 BALL VALVE	1
8	25-00386	O-RING 62,00x3 VENTURI POLIDORO	1
9	25-00431	AIR VENT VALVE 1/2" CST	1
10	25-00432	FLOWSWITCH DN10	1
11	25-00495	CONNECTION 3/4" SFK	2
12	25-00541	PIMP UPS 15-48 CIL2 GRUNDFOS	1
13	26055LA	3/4" "T" CONNECTION CYL. EXP. VESSEL	1
14	26068LA	T CONNECTION 3/4" CYLINDER EXP. VESSEL	1
15	30-00129	CONDENSATE DRAIN PIPE	1
16	30-00138	CONDENSING EXCHANGER	1
17	30-00205	SIGMA GAS VALVE 120V 60Hz 10/60°C	1
18	30-00235	VENTURI NAT.GAS SFK55	1
19	30-00253	AIR PRESSURE SWITCH 1.05 Kilopascal	1
20	30-00254	AIR PRESSURE SWITCH 10/20 Pa	1
21	34001LA	BRASS BACKNUT 1/2" E.24x5	1
22	34002LA	BRASS BACKNUT 3/4" E.30x5	2
23	38525LA	BIFILAR CLAMP SPRING TYPE 24.4-26	2
24	40-00087	CABLE CONDENS. TRAP/FRAME ASSY	1
25	40-00088	CABLE CONDENS. IONISATION	1
26	40-00106	IGNITION ELECTRODE CABLE	1
27	40-00253	EXHAUST FAN RG-128 UL 115 W	1
28	40-00266	IGNITION TRANSFORMER UL/CS ZAG 2 XV - 07000060	1
29	40-00300	AIR PRESSURE SWITCHES CABLE	1
30	40-00312	SAFETY THERMOSTAT CABLE	1
31	43001LA	WASHER Ø 23.5x17x2 3/4" -AFM34	11
32	43002LA	WASHER Ø 18.5x10.2x2 1/2" -AFM34	1
33	43018LA	SYLICON/TRANSPARENT PIPE Ø 8x4	1
34	43018LA	SYLICON/TRANSPARENT PIPE Ø 8x4	1
35	43018LA	SYLICON/TRANSPARENT PIPE Ø 8x4	1
36	43018LA	SYLICON/TRANSPARENT PIPE Ø 8x4	1
37	43018LA	SYLICON/TRANSPARENT PIPE Ø 8x4	1
38	43018LA	SYLICON/TRANSPARENT PIPE Ø 8x4	1
39	43042LA	RED SYLICON WASHER FOR SYLICON PIPES D.8x4	1
40	43045LA	WASHER 33x33x1,5 Ø 19	2
41	43208LA	WASHER 23x30x3sp EPDM 80sh 1"	2
42	43278LA	FLANGE WASHER D.82 EPDM	1
43	45-00001	T CONNECTION 3/8" D.3.5 DOUBLE PRESSURE SWITCH	1
44	50-00161	AIR INTAKE TUBE	1
45	50088LA	ELECTRIC PLUG 3xAWG18 BLACK 1,5mt	1
46	54016LA	LOWER FITTINGS PLATE FIXING CLIP D.2X48,5 ZINC	1
47	55-00038	NIPPLES 1/2"-3/4"	2
48	55-00243	ADAPTER 3/8"-1/4" MF	1
49	55-00313	METRIC SNAP-FIT GROMMETS	1
50	55-00324	PIPE WASHER Ø12	1
51	55-00390	PRESSURE POINT	1
52	55-00391	NIPPLES 1/2-3/4" CONE NPT w/SPRING SIDE	1
53	55-00422	CONNECTION 3/4 V. NoRET.	1
54	55-00480	T CONNECTION 3/4" / 1" FFM	1
55	57525LA	VENTURI NEGATIVE PRESSURE POINT 2008	1
56	68014LA	1/2" CONNECTION W/THRED	2
57	68244LA	SIPHON CONNECTION 2006	1
58	73516LA	HTG CLIP SENSOR X PIPE 17/18mm BLUE	3
59	86060LA	FLUE SAFETY THERMOSTAT	1
60	96055LA	AIR VENT VALVE 1/4 METAL	1
61	96076LA	NON-RETURN VALVE x AQUAMIX	1

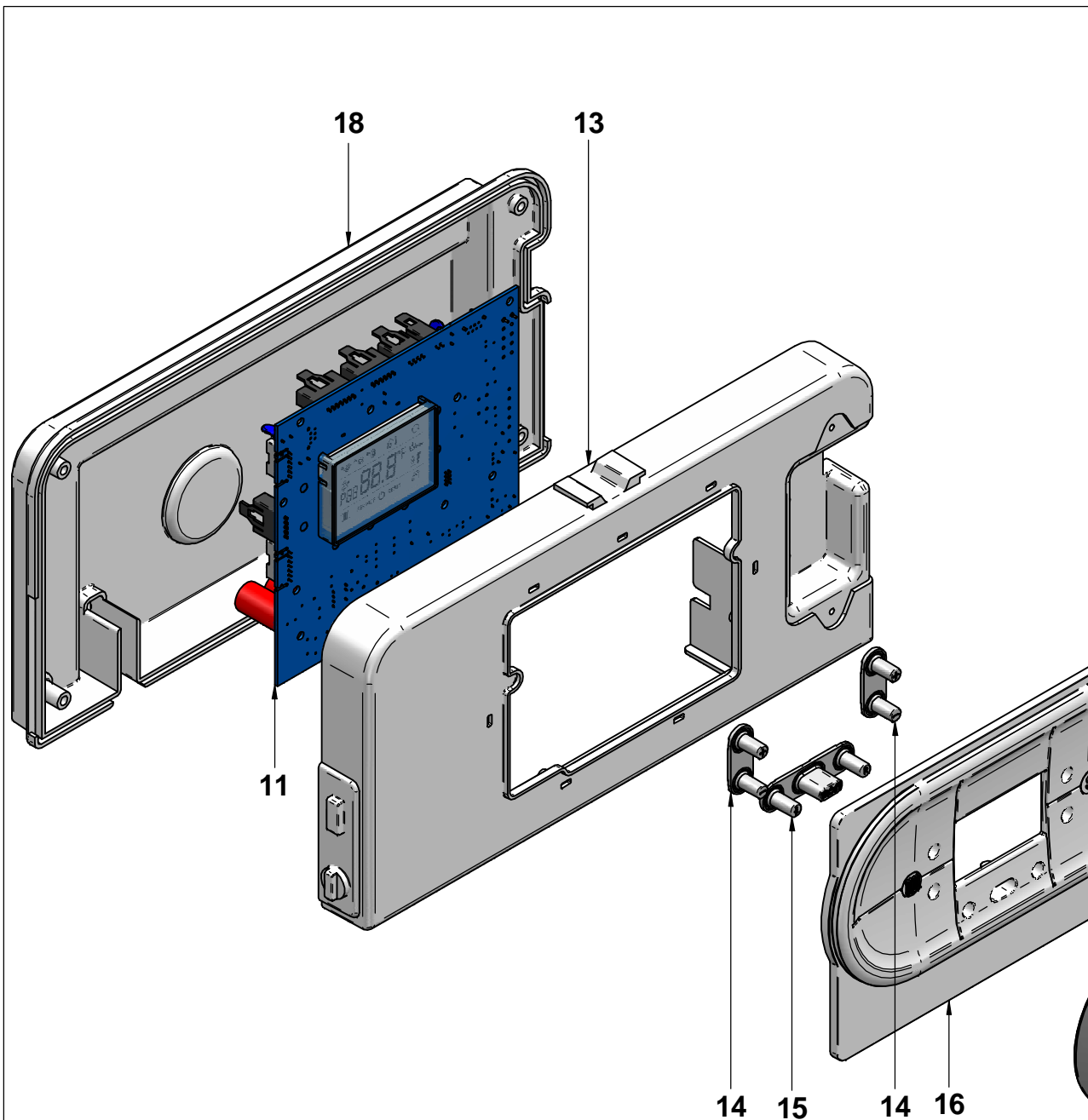
**12-01968**  
**SAFETY VALVE**  
**FITTINGS KIT**

Disegnatore	Rev.	data revisione	Autore revisione	Descrizione revisione
cristian.pazzaglini				
Modificato				
cristian.pazzaglini				
Data di creazione	Scala	Materiale	Sp.	Peso (Kg)
25/05/2017				2258,080
Note				
Descrizione completa <b>SFK 55 FLOW-TECH</b> <b>- CS R2 CDN - UL/CSA</b>				
				tecnologia nel calore dal 1959
Codice				Revisione
<b>A345A582B601</b>				<b>00</b>

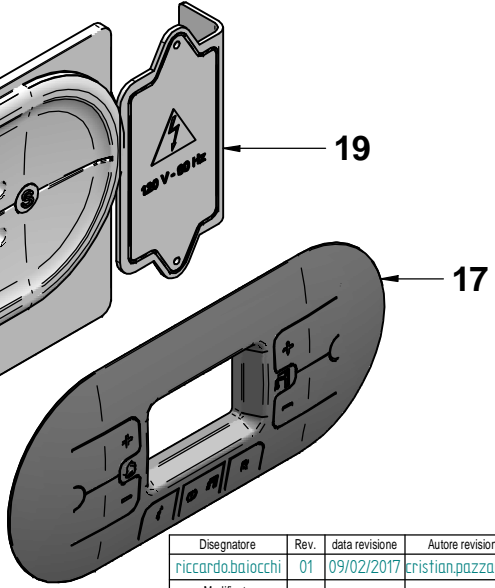


N°	Code	Description	Qty
1	12-01451	PIPE Ø18 FOR SAFETY VALVE FITTINGS KIT	1
2	12-01948	PIPE Ø14 GAS VALVE w/ TAPERED NIPPLE	1
3	25-00490	SAFETY VALVE 3/4" LF 4L-150	1
4	43001LA	WASHER Ø 23.5x17x2 3/4" -AFM34	5
5	43002LA	WASHER Ø 18.5x10.2x2 1/2" -AFM34	1
6	55-00155	NIPPLES 3/4" BSPT CONICAL	2
7	83630LP	PIPE Ø18 HTG FLOW CONNECTION	1

Disegnatore	Rev.	data revisione	Autore revisione	Descrizione revisione
crislian.pazzaglini	01	23/01/2017	crislian.pazzaglini	Cambiato tubo gas
Modificato				
crislian.pazzaglini				
Data di creazione	Scala	Materiale		Sp.    Peso (Kg)
20/01/2017	1:1.5			.886
Note				
Descrizione completa				
SAFETY VALVE FITTINGS KIT w/TAPERED NIPPLE PIPE				
SFK 55 CANADA				
 tecnologia nel calore dal 1959				Revisione
				01
12-01968				



N°	Code	Description	Qty
1	31388LA	FRAME-PRINTED CIRCUIT BOARD CABLE UL/CSA	2
2	31396LA	EXHAUST FAN CABLE	1
3	40-00091	CIRCULATING PUMP CABLE	1
4	40-00223	IGNITION TRANSF. CABLE	1
5	40-00245	FAN POWER SUPPLY CABLE	1
6	40-00246	POWER SUPPLY CABLE	1
7	40-00247	FLOWMETER CABLE	1
8	40-00248	D.H.W/HEATING SENSOR CABLE	1
9	40-00249	RECIRCULATION SENSOR CABLE	1
10	40-00250	GAS VALVE CABLE	1
11	40-00271	MAIN P.C.B.	1
12	40-00311	THERMOFUSE CABLE	1
13	45-00002	CONTROL PANEL R1	1
14	45-00008	2 BUTTONS GROUP R2 PANEL	2
15	45-00009	3 BUTTONS GROUP R2 PANEL	1
16	45-00024	CONTROL PANEL FRONT COVER	1
17	45-00050	CONTROL PANEL COVER	1
18	64092LA	CONTROL PANEL BACK PLATE OBLO'	1
19	64162LA	TERMINAL BLOCK COVER 120V-60HZ	1



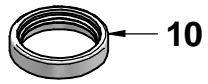
14 15 14 16

Disegnatore	Rev.	data revisione	Autore revisione	Descrizione revisione
riccardo.baiocchi	01	09/02/2017	crislian.pazzagliani	Aggiunto cavo pompa per nuovo circ.
Modificato				
crislian.pazzagliani				
Data di creazione	Scala	Materiale	Sp.	Peso (Kg)
23/06/2015	12			372.453
Note				
Descrizione completa <b>CONTROL PANEL COMPLETE</b> SFK 55 - USA				




tecnologia nel calore dal 1959

Codice Revisione  
**41-00130** **01**



N°	Code	Description	Qty
1	13-00220	RADIANT HEAT EXCHANGER FRONT PANEL	1
2	13-00222	RADIANT HEAT EXCHANGER BACK PANEL	1
3	25-00312	O-RING EXCHANGER DOOR	1
4	30-00104	CERAMIC FIBRE - BOTTOM	1
5	30-00105	CERAMIC FIBRE-ROUND TYPE 20SP.	1
6	30-00131	CERAMIC AIRBED	1
7	35026LA	ELECTRODE WASHER	2
8	40-00127	IGNITION ELECTRODE ISO-USA.w/CABLE	1
9	40-00128	IONISATION ELECTRODE ISO-USA w/CABLE	1
10	55-00137	WASHER 74x61 sp.17 EPDM	1
11	73517LA	THERMO FUSE 102øC RED ISOTHERM. 1/4"	1

Disegnatore	Rev.	data revisione	Autore revisione	Descrizione revisione
francesco.bonetti				
Modificato				
cristian.pazzaglini				
Data di creazione	Scala	Materiale	Sp.	Peso (Kg)
20/05/2014	14			2201.787
Note				
Descrizione completa				
CONDENSING EXCHANGER RADIANT SK1 50				
 tecnologia nel calore d al 1959				
Codice			Revisione	
30-00138			00	

OGNI TECNICO E' PUGNILE NON SOLO INFORMATIVO, MA ANCHE IN DIRITTO DI PROPRIETA' INTELLETTUALE. IL MODELLO DI PRESENTAZIONE E' SOLO A TITOLO ILLUSTRATIVO. IL CLIENTE NON E' RESPONSABILE PER QUALSIASI ERRORE CONTENUTO NEL PRESENTE DOCUMENTO. SE SONO IN ERRORE DI STAMPA O DI TRASMISSIONE, TUTTI I DIRITTI SONO RISERVATI. NESSUNA PARTE DI QUESTO DOCUMENTO PUO' ESSERE RIPRODOTTA, FOTOCOPIATA, INFORMATIZZATA, O IN ALTRIMODO, SENZA IL CONSENSO PREVIAMENTE OTTENUTO. IL CLIENTE E' RESPONSABILE PER LA CORRETTA INSTALLAZIONE E L'USO DEL PRODOTTO. IL CLIENTE E' RESPONSABILE PER LA CORRETTA INSTALLAZIONE DEL PRODOTTO.