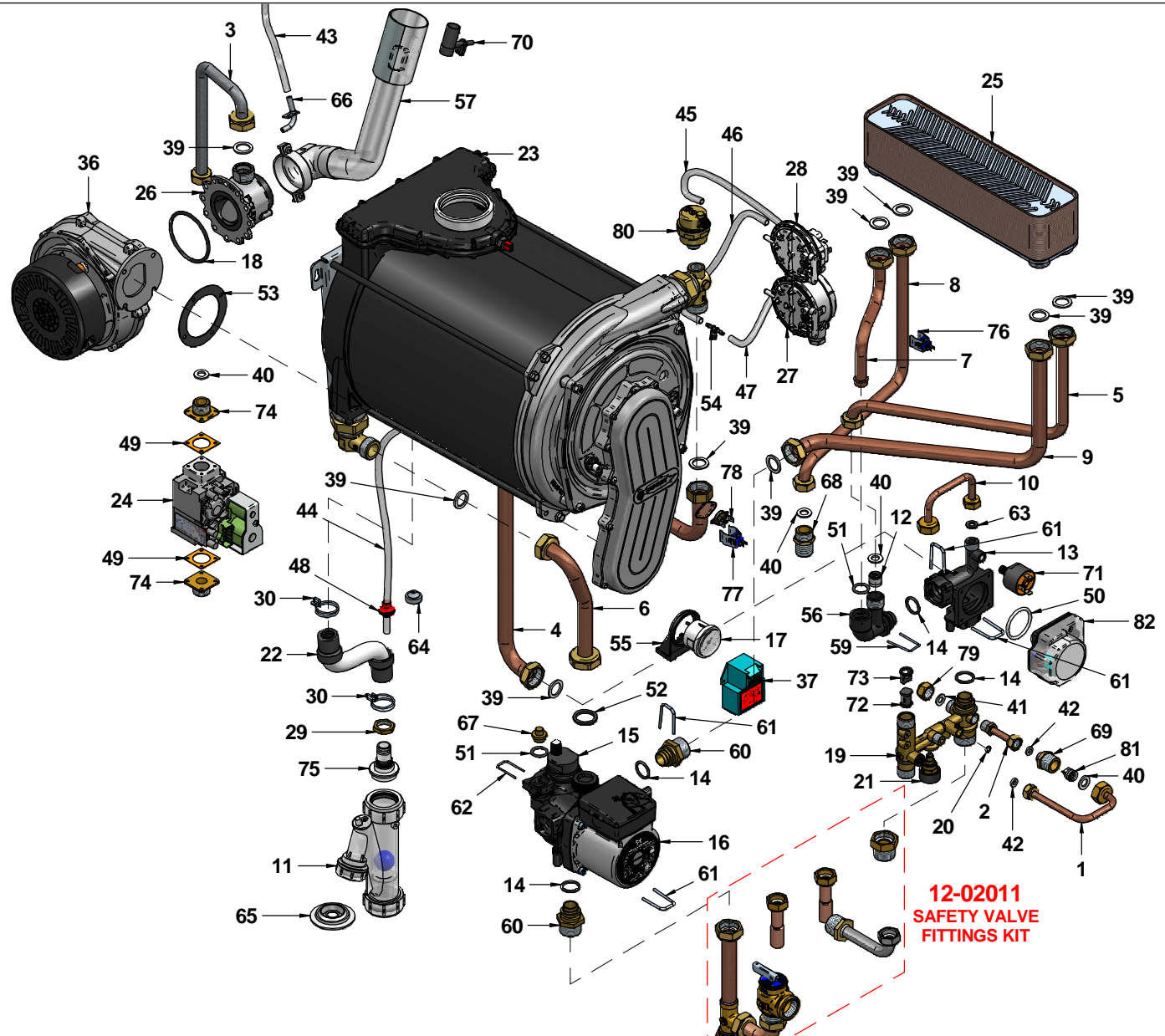


N°	Code	Description	Qty
1	12-01623	FRAME ASSEMBLY COMPLETE	1
2	15-01043	CONTROL PANEL LEFT SIDE BRACKET	1
3	15-01044	CONTROL PANEL RIGHT SIDE BRACKET	1
4	15-01077	ROOM-SEALED CHAMBER TOP	1
5	15-01078	CASING RIGHT SIDE PANEL	1
6	15-01079	CASING LEFT SIDE PANEL	1
7	15-01081	CONDENSATE SIPHON FIXING PLATE	1
8	15-01222	FLUE EXHAUST CAP	1
9	15-01228	WALL HANGING BRACKET	1
10	15-01253	ROOM-SEALED CHAMBER BOTTOM PLATE	1
11	15-01286	EXCHANGER FIXING BRACKET	1
12	15-01382	TRASFORMER FIXING PLATE	1
13	15-01610	SPACER	1
14	35-00081	CASING FRONT PANEL	1
15	35-00082	INSULATION FRONT PANEL	1
16	35-00090	INSULATION TOP PANEL	1
17	35-00091	INSULATION CASING SIDE PANELS	2

Disegnatore	Rev.	data revisione	Autore revisione	Descrizione revisione
cristian.pazzagliani	01	04/05/2017	cristian.pazzagliani	Elimin. racc. conico gas + sostituito kit idrico
Modificato	02	11/10/2017	cristian.pazzagliani	Cambiato distanziale muro
cristian.pazzagliani				
Data di creazione	Scala	Materiale	Sp.	Peso (Kg)
01/12/2015	16			3676.957
Note				
Descrizione completa R2K 55 DUAL-TECH MET CND - CS R2 UL/CSA				
 tecnologia nel calore dal 1959		Codice A341A272A601	Revisione 02	


N°	Code	Description	Qty
1	12-01406	PIPE Ø 8 N.RET.VALVE FLOW	1
2	12-01407	PIPE Ø8 NOT RETURN VALVE L=57 STRAIGHT	1
3	12-01590	PIPE Ø14 GAS OUTLET	1
4	12-01605	PIPE Ø18 HTG FLOW	1
5	12-01606	PIPE Ø14 FLOWS./PLATE EXCHAN.	1
6	12-01607	PIPE Ø18 HTG RETURN	1
7	12-01608	PIPE Ø14 3WAY VALVE/EXCHANG.	1
8	12-01609	PIPE Ø14 HOT W./PLATE EXCH.	1
9	12-01610	PIPE Ø18 CIRCUL./PLATE EXCH.	1
10	12-01611	PIPE Ø8 BY-PASS	1
11	25-00065	CONDENSATE TRAP - pp	1
12	25-00256	BY-PASS D.15	1
13	25-00257	DIVERTER VALVE PLASTIC BODY	1
14	25-00269	PUMP/PUMP CONNECTION BODY OR 18,64x3,53 EPDM	4
15	25-00330	AIR VENT VALVE GRUNDFOSS	1
16	25-00331	PUMP AOKR GRUNFOS UPS 15-58	1
17	25-00363	WATER PRESSURE GAUGE-QUICK CONNECTION	1
18	25-00386	O-RING 62,00x3 VENTURI POLIDORO	1
19	25-00401	COLD WATER/HEATING FLOW CONNECTION	1
20	25-00404	OR 5,00x2 EPDM	1
21	25-00491	FILLING TAP	1
22	30-00129	CONDENSATE DRAIN PIPE	1
23	30-00138	CONDENSING EXCHANGER	1
24	30-00205	SIGMA GAS VALVE 120V 60Hz 10/60°C	1
25	30-00224	HEAT EXCHANGER 30 PLATES	1
26	30-00235	VENTURI NAT.GAS SFK55	1
27	30-00253	AIR PRESSURE SWITCH 1,05 Kilopascal	1
28	30-00254	AIR PRESSURE SWITCH 10/20 Pa	1
29	34001LA	BRASS BACKNUT 1/2" E.24x5	1
30	38525LA	BIFILAR CLAMP SPRING TYPE 24.4-26	2
31	40-00087	CABLE CONDENS. TRAP/FRAME ASSY	1
32	40-00088	CABLE CONDENS. IONISATION	1
33	40-00106	IGNITION ELECTRODE CABLE	1
34	40-00223	IGNITION TRANSF. CABLE	1
35	40-00250	GAS VALVE CABLE	1
36	40-00253	EXHAUST FAN RG-128 UL 115 W	1
37	40-00266	IGNITION TRANSFORMER UL/CS ZAG 2 XV - 07000060	1
38	40-00300	AIR PRESSURE SWITCHES CABLE	1
39	43001LA	WASHER Ø 23.5x17x2 3/4" -AFM34	9
40	43002LA	WASHER Ø 18.5x10.2x2 1/2" -AFM34	4
41	43003LA	WASHER Ø15x8x2 3/8" -AFM34	1
42	43007LA	WASHER D.11.5x6x2 1/8" -AFM34	2
43	43018LA	SYLICON/TRANSPARENT PIPE Ø 8x4	1
44	43018LA	SYLICON/TRANSPARENT PIPE Ø 8x4	1
45	43018LA	SYLICON/TRANSPARENT PIPE Ø 8x4	1
46	43018LA	SYLICON/TRANSPARENT PIPE Ø 8x4	1
47	43018LA	SYLICON/TRANSPARENT PIPE Ø 8x4	1
48	43042LA	RED SYLICON WASHER FOR SYLICON PIPES D.8x4	1
49	43045LA	WASHER 33x33x1,5 Ø 19	2
50	43145LA	DIVERTER VALVE O-RING M.PLEX	1
51	43150LA	EPDM O-RING 14X30 FOR BRASS CONNECTIONS M.PLEX	2
52	43208LA	WASHER 23x30x3sp EPDM 80sh 1"	1
53	43278LA	FLANGE WASHER D.82 EPDM	1
54	45-00001	T CONNECTION 3/8" D.3,5 DOUBLE PRESSURE SWITCH	1
55	45-00042	WATER PRESSURE GAUGE FIXING PLATE	1
56	45-00048	2-WAY VALVE BY-PASS CONNECTION	1
57	50-00161	AIR INTAKE TUBE	1
58	50088LA	ELECTRIC PLUG 3xAWG18 BLACK 1,5mt	1
59	54022LA	ZINC-PLATED STEEL FIXING CLIPMULTIPLY	1
60	55-00191	NIPPLES 3/4" w/O-RING	2
61	55-00215	FIXING CLIP - STAINLESS STEEL	4
62	55-00227	EXPANSION VESSEL PIPE FIXING CLIP	1
63	55-00229	WASHER 3/8" Ø15x8x2	1
64	55-00313	METRIC SNAP-FIT GROMMETS	1
65	55-00324	PIPE WASHER Ø12	1
66	55-00390	PRESSURE POINT	1
67	55-00426	BRASS CAP C3 CIRCULATING PUMP	1
68	56009LA	NIPPLE 1/2"-1/2" E.22x35 RKA/GAS VALVE ELBOW	1
69	56087LA	CL 2510 1/4"-1/2" CONNECTION	1
70	57525LA	VENTURI NEGATIVE PRESSURE POINT 2008	1



12-02011
SAFETY VALVE
FITTINGS KIT

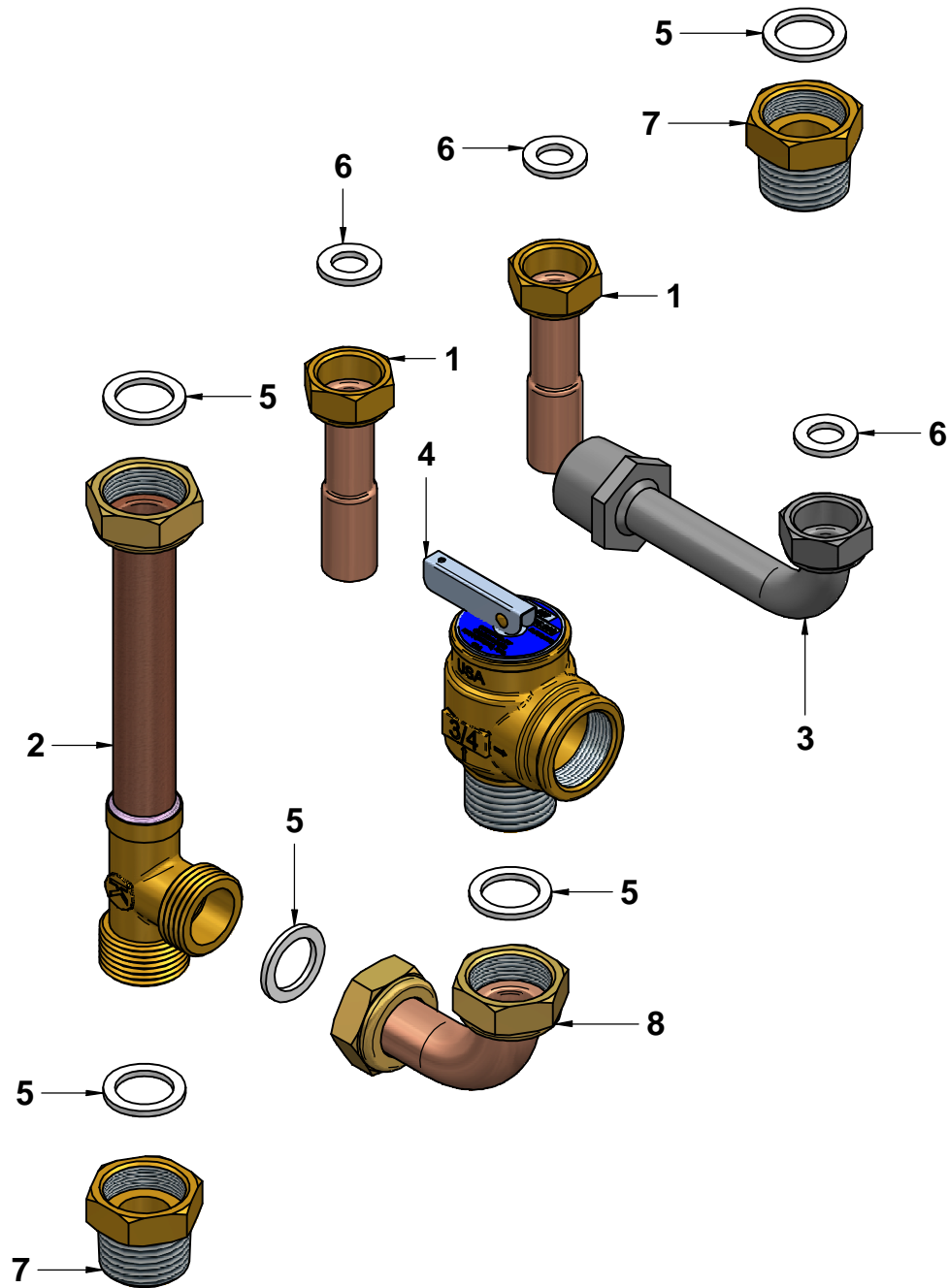
N°	Code	Description	Qty
71	59015LA	WATER PRESSURE SWITCH	1
72	61004LP	FLOWSWITCH PISTON	1
73	61005LA	PISTON STOP	1
74	68014LA	1/2" CONNECTION W/THRED	2
75	68244LA	SIPHON CONNECTION 2006	1
76	73515LA	DHW CLIP SENSOR X PIPE 13/15 mm. BLUE-T7335D1081B	1
77	73516LA	HTG CLIP SENSOR X PIPE 17/18mm BLUE	1
78	86006LA	SAFETY THERMOSTAT 95gr(ø)E.	1
79	89133LA	BRASS CAP 3/8" F.E.19 Fi.15	1
80	96012LA	AUTOMATIC AIR VENT VALVE 3/8"	1
81	96018LA	NON-RETURN VALVE	1
82	96073LA	DIVERTER VALVE ACTUATORUL/CSA	1

Disegnatore	Rev.	data revisione	Autore revisione	Descriptione revisione
cristian.pazzagli	01	04/05/2017	cristian.pazzagli	Elimin. racc. conico gas + sostituito kit idrico
Modificato				
cristian.pazzagli				
Data di creazione	Scala	Materiale	Sp.	Peso (Kg)
01/12/2015	155			3678,140
Note				
Descrizione completa R2K 55 DUAL-TECH MET CND - CS R2 UL/CSA				




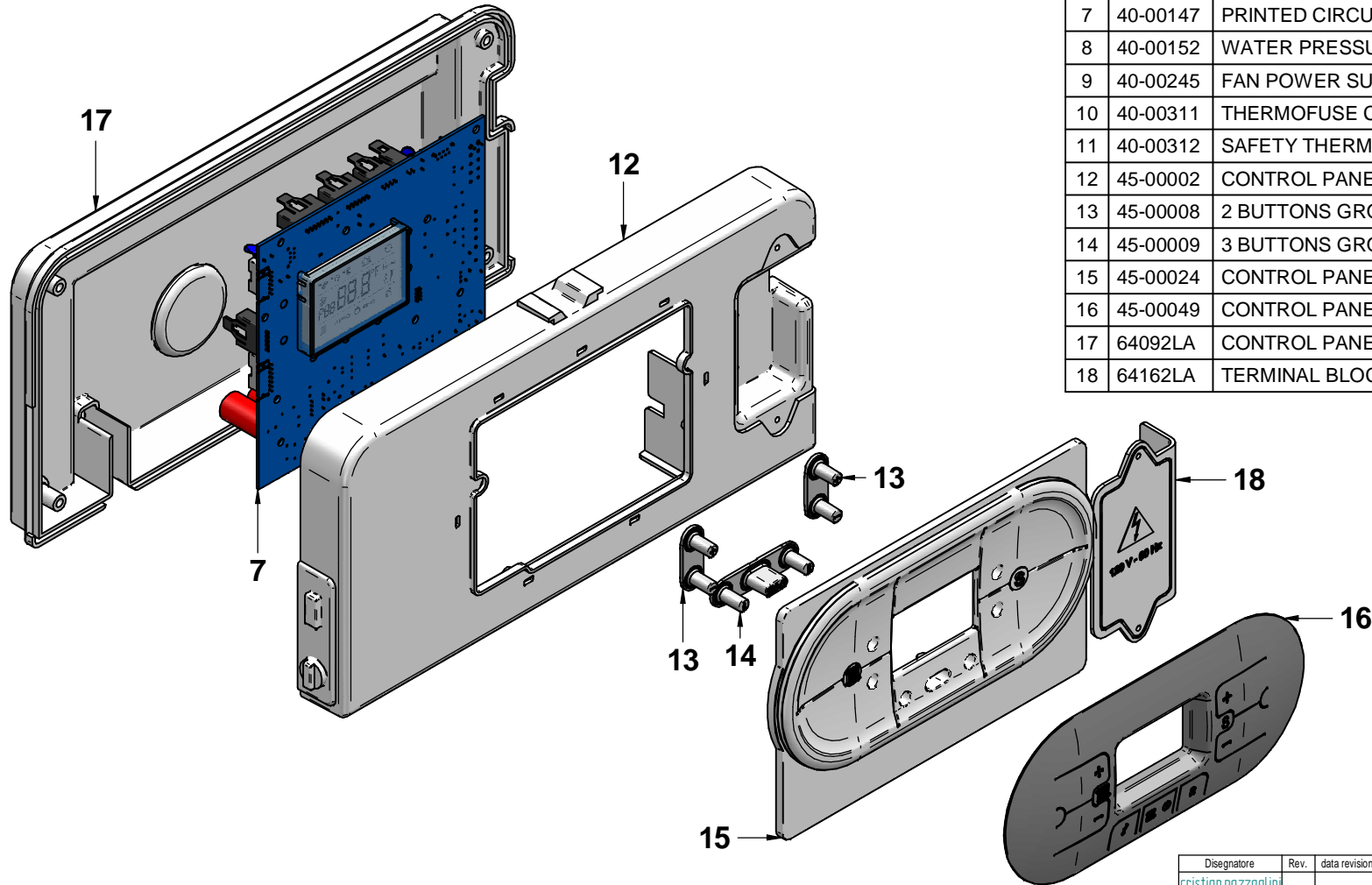
tecnologia nel calore dal 1959

Codice Revisione
A341A272A601-01




N°	Code	Description	Qty
1	12-00282	PIPE D.14/16x60	2
2	12-01451	PIPE Ø18 FOR SAFETY VALVE FITTINGS KIT	1
3	12-01948	PIPE Ø14 GAS VALVE w/ TAPERED NIPPLE	1
4	25-00247	SAFETY VALVE 3/4"M-3/4"F 30PSI - 1040705	1
5	43001LA	WASHER Ø 23.5x17x2 3/4" -AFM34	5
6	43002LA	WASHER Ø 18.5x10.2x2 1/2" -AFM34	3
7	55-00155	NIPPLES 3/4" BSPT CONICAL	2
8	83630LP	PIPE Ø18 HTG FLOW CONNECTION	1

Disegnatore	Rev.	data revisione	Autore revisione	Descrizione revisione
crislian.pazzaglino				
Modificato				
crislian.pazzaglino				
Data di creazione	Scala	Materiale	Sp.	Peso (Kg)
22/02/2017	1:1			6.395
Note				
Descrizione completa				
SAFETY VALVE FITTINGS KIT w/TAPERED NIPPLE PIPE				
R2K 55 CANADA				
				
tecnologia nel calore dal 1959				
Codice				Revisione
12-02011				00



N°	Code	Description	Qty
1	31385LA	POWER SUPPLY CABLE UL/CSA	1
2	31388LA	FRAME-PRINTED CIRCUIT BOARD CABLE UL/CSA	1
3	31396LA	EXHAUST FAN CABLE	1
4	31403LA	D.H.W SENSOR CABLE	1
5	31428LA	FLOWSWITCH MICRO LEAD UL/CSA	1
6	40-00092	PUMP/3 WAY VALVE CABLE UL/CSA	1
7	40-00147	PRINTED CIRCUIT BOARD PREMIX	1
8	40-00152	WATER PRESSURE SWITCH CABLE	1
9	40-00245	FAN POWER SUPPLY CABLE	1
10	40-00311	THERMOFUSE CABLE	1
11	40-00312	SAFETY THERMOSTAT CABLE	1
12	45-00002	CONTROL PANEL R1	1
13	45-00008	2 BUTTONS GROUP R2 PANEL	2
14	45-00009	3 BUTTONS GROUP R2 PANEL	1
15	45-00024	CONTROL PANEL FRONT COVER	1
16	45-00049	CONTROL PANEL COVER R1K GRAY	1
17	64092LA	CONTROL PANEL BACK PLATE OBLO' - 138006	1
18	64162LA	TERMINAL BLOCK COVER 120V-60HZ	1

Disegnatore	Rev.	data revisione	Autore revisione	Descrizione revisione
cristian.pazzaglini				
Modificato				
cristian.pazzaglini				
Data di creazione	Scala	Materiale	Sp.	Peso (Kg)
17/12/2015	1:2.2			372.433
Note				
Descrizione completa CONTROL PANEL COMPLETE R2K 55 CANADA				
 tecnologia nel calore dal 1959				
Codice				Revisione
41-00183				00

